

TEMPLE BETH-EL



BULLETIN

September 2016 28 Av - 27 Elul 5776

1203 Comanche Drive
Rockford, Illinois 61107 815-398-5020

Mission Statement: Temple Beth-El is a congregation of Jews and their families building a community committed to participation in all aspects of Jewish life. By community, we mean a group of diverse people who share a strong connection fostered by Temple Beth-El. By participation, we mean that all members will partake in and support the spiritual, cultural, educational and social life of Temple Beth-El.

President Announces Strategic Planning

HIGH HOLY DAY SCHEDULE

Selichot

Saturday, September 24
Gathering 8:30 pm, Service 9:30 pm

Erev Rosh Hashanah

Sunday, Oct. 2
Service 8:00 pm

Rosh Hashanah

Monday, Oct. 3
Morning Service 10:00 am
Tashlich 2:30 pm

Kol Nidre

Tuesday, Oct. 11 Service 8:00 pm

Yom Kippur

Wednesday, Oct 12
Morning Service 10:00 am
Afternoon Services/Yizkor/Neilah 3:30 pm
Break-the-Fast approx. 6:30 pm

Sukkot Service

Sunday, Oct. 16 Service 11:00 am

Simchat Torah Festival Service

Sunday, Oct. 23 Service 11:00 am

Chaverim,

As September arrives, much is going on in all of our lives. School is well underway for our children and grandchildren. The lull of summer is giving way to the rush of the fall. Vacations have been taken and we are back at work. Trips to water parks have been replaced with sports practice, lessons and homework. And of course, we have our sacred gathering for the High Holy Days. Many people have already been working hard to get ready.

Although this year, the High Holy Days do not even begin until October, we can utilize the month before to better prepare for them. This is part of Jewish tradition. On the Hebrew calendar, the month of Elul is used almost entirely to prepare for the High Holy Days. Special psalms and prayers are recited at daily worship and the shofar is even sounded. In a more modern style there is #BlogElul which is a series of daily blog entries on various topics. Look for #BlogElul on Twitter. Hopefully, there will also again be the Jewels of Elul, a daily thoughtful piece that can be sent to your inbox. Go to jewelsofelul.com for details.

This year, the month of September corresponds almost exactly to the month of Elul which might make it easier for us to think about. How else might we prepare? Perhaps we might begin by reflecting on the year that has passed. What has changed in our lives since last September? What has remained the same? Are there parts of our lives that we wish had changed but did not? What might our role be in trying to change the aspects that we'd like? And of course, in reflecting on the year, we might also delve into our missteps over the course of the year. What do we wish that we had done? What do we wish that we had *not* done? We might also, then, begin to make amends for the wrongs



From Rabbi Binah Wing

INSIDE THIS ISSUE:

President's Message	3
Service Schedule	14
From the Board of Directors	2
Religious School News	4
Friends of Temple Beth-El	11, 12
Birthdays & Anniversaries	5
Yahrzeits and Contributions	6
Calendar	15

we have committed.

Apologizing is never easy but it can go a long way in healing relationships and taking weights off of our consciences. As you know, during the High Holy Days, we try and mend our relationship with God which has surely suffered over the course of the year. But this is also a time to work on our other relationships as well. We can ask ourselves – have we been the best parent, child, sibling, friend that we could be?

Now is the time to begin thinking about these important questions so that when we walk into the sanctuary on October 2nd, we will be ready. The High Holy Days are meant to be an interactive experience. They don't just happen *to you*, while you sit and take it in. Rather, you also must put in the "work" necessary to find meaning.

One easy way to enter into these days and this process is to attend our beautiful Selichot service. In many ways, this service captures the themes of all of the High Holy Days. It is not a long service but it is quite powerful. It helps to set the tone for your High Holy Day experience. The evening begins with a social time at 8:30pm and the service begins at 9:30pm.

I look forward to spending these High Holy Days together.

Shlomo, Lilly, Dana, and I wish you all a sweet, healthy, and happy New Year 5777!

Come Join Us!
S'more Shabbat
Friday, September 23rd
 Services begin at 6:00 pm
 Followed by a hot dog dinner and
 tasty s'mores.

Come celebrate the end of
 summer!



From the Temple Board.... By Secretary Ellen Salley



The Temple Board met on August 10th and started a new year of D'Var Torah. Rob Levy talked to us about the holiday of Tu B'Av. It is held on the 15th day of the month of Av and is called the holiday of love. In ancient times women would dance in the vineyards in hopes of finding a husband. It is not celebrated much today but is making a comeback in Israel.

Jim said he would be meeting with Wendy Huss and Rachel Bagne to discuss how to improve our Temple media. Then the board talked with Larry Pearlman who will help us develop a strategic plan for our Temple's future. He outlined the steps he envisioned the Temple members and the Board would be taking to put this plan together. He would like to talk to all Temple members and other Jewish people who may not necessarily be Temple members to hear their thoughts and ideas for the Temple. From there the information gathered would be divided into themes and a plan to carry out these themes will be put in place.

Rabbi enjoyed her time at camp and was very appreciative of the board to let her participate. She said that having a Rabbi at camp is very beneficial to the campers and staff. OSRUI was grateful to have her. Rabbi reported that Shabbat in the park was lovely. She reminded us that the new board will be installed on August 19th. She is now busy preparing for the High Holy Days.

Sharon reported that the cash on hand that the Temple has is good for now. She reminded us that some people have already paid their dues for the whole year and those are one time payments. Brina reported that as of July 31st we had 61 pledges with 29 paid in full, which is why our cash on hand is good.

The Foundation is doing well and is back to where it was in October and November of last year. Rob reported that we gained 2.56%.

Although the Religious Functions committee did not meet in August, preparations for the High Holy days are underway. The Rosh Hashanah dinner will be headed by Connie Paris and congregants will be asked to bring salads and desserts. Andrea reported that City Market Shabbat went well and Pet Shabbat and S'More Shabbat will be coming up. There will be no Hanukkah dinner this year but we will have latkes at the Oneg after services.

Jordan reported that the new refrigerator and freezer will be put in and the old one removed. He cleaned out the boiler room, fixed broken lights outside, and replaced the last of the old broken tables. The floors have been cleaned and the carpeting will be cleaned before the holidays.

Lauren reported that the first day of Sunday School will be on September 11th followed by the Federation Picnic. There will be three religious school classes and there are three new students. GRTY has planned out their year of events and their first meeting will be on September 25th at 12:00.



Since I became a member of the Temple Board of Directors, two years ago, we have discussed at length the challenges facing our Temple as we move forward. These challenges include, of

course, declining membership and revenue.

Earlier this summer, Larry Pearlman and Jerry Paris approached several members of the Temple Board to discuss undertaking Strategic Planning. Larry and Jerry explained to us that the Strategic Planning process is intended to help us to identify our strengths, weaknesses, opportunities, objectives and capabilities, with the goal being to formulate and implement a path forward.

The Temple Board of Directors recently agreed to utilize Larry's expert services in leading the Strategic Planning process. We have scheduled five sessions in September and October, during which Larry and at least one Board member will meet with Temple members to discuss and seek your comments about our strengths and weaknesses and how to move ahead in a positive direction, religiously and financially, during the coming years.

The Strategic Planning sessions are scheduled to take place on the following dates and times:

Sunday September 25, 2016, at 10:30 A.M. at the home of Karen and Mark Zussman;

Saturday October 8, 2016, at 7:00 P.M. at Temple Beth-El (Havdallah Service/pizza dinner);

Saturday October 22, 2016, at 7:00 P.M. at the home of Lisa and Larry Pearlman; and

Sunday October 30, 2016, at 12:30 P.M. at Temple Beth-El.

5th meeting TBD

During the next few weeks, all Temple members will be contacted by members of the Board about signing up for one of these five sessions. If you prefer, please contact me or Temple facilitator Jay Sklar to let us know which of these five sessions you wish to attend.

I am strongly urging all Temple members to participate in the Strategic Planning process, I am confident that with Larry's assistance and all of our input, the end result of this Strategic Planning process is going to be positive and beneficial for our congregation.

Jim

Continued from Page 2

Karen reported that we are still collecting plastic bags, brown paper bags, and small toiletries. The social action committee will continue this drive through September. The annual food drive will begin when the High Holy Days start.

The art auction will be on November 5th at a cost of \$18 per person. There will be a cheesecake dessert table and cash bar. Mary reported that the Schneider's donated 6 pieces of art to the auction. Dates for the Rummage Sale and FAR are still being planned.

Jay Sklar reported that the outside locks on the doors will be replaced by the end of August. Key fobs continue to be distributed to those that need them.

Ellen reported that the Federation campaign has brought in \$26,400. The Federation will be participating in the Ethnic Parade and Festival on August 27th. The banner and t-shirts will read Greater Rockford Jewish Community this year. The Jewish Community picnic will be Sunday September 11th from 11:30-2:30. The last book discussion was a success and the next book talk will be on September 25th on the book Notorious RGB the Life and Times of Ruth Bader Ginsburg. The campaign kick-off dinner will be held at Mau Nah Tee See Country Club on November 20th at 5:00.

Congratulations to Lily Wing who will be starting middle school this year and Jordan Towne who got a job at Woodward Governor. Congratulations also to Katie Lamont for scoring the third highest score out of 200 students on her second year medical exam. Jamie Zussman enjoyed her trip to Israel and arrived back safely.

10 Minutes of Torah

UNION FOR REFORM JUDAISM'S
DEPARTMENT OF LIFELONG JEWISH LEARNING

The Union will send you a one page e-mail each day on a topic of Jewish Interest. All you need to do is find 10 minutes a day to "do Torah."

Sign up by logging on to
WWW.urj.org/Torah/Ten

SCHOOL DAZE

200 Words or Less...

By Goldie & Adrian



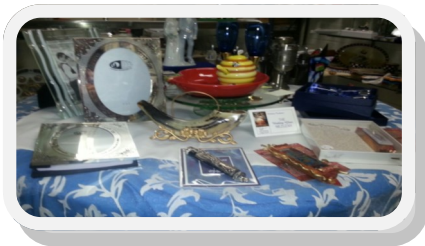
summer is beginning to wind down. We hope you had a great one and are looking forward to your fall activities. Our school year begins on Sunday, September 11 at 10:00. Please make sure you turn in your completed registration forms and payment to the Temple office at your earliest convenience.

We invite you all to join us in the sanctuary at 10:00 for greetings, opening remarks and a light continental breakfast in the social hall before the students go to their respective classrooms. Students will be able to meet up with their families at 11:30 to attend the Federation sponsored joint picnic. Come one and all and enjoy fellowship and good food!

We'd like to congratulate Madeline Towne for her winning entry in the calendar contest that Religious School entered at the end of last school year. We are very proud that, once again, another TBE student has won! Every family will receive a copy of this new calendar on the first day of school.

We look forward to celebrating with the Levy family on September 17 when Noa becomes a Bat Mitzvah!

The Temple Beth-El Gift Shop



GIFT SHOP HOURS

Monday—Friday, call the office

Sunday 10am - noon*

*Open Sundays when school is in session.

If you need to visit the shop at another time, please call the Temple office (398-5020) or Pam Reum (979-9497)

Jewish Community Annual

BBQ 2016/

5776



Who: Members and Guests of the Rockford Jewish Community

Date: Sunday, September 11, 2016

Time: 11:30 a.m.

Place: Temple Beth-El, 1203 Comanche Dr. (rain or shine)

Menu: Kosher hot dogs & hamburgers, salads, hot/ cold veggies & deserts!!

Price: No cost but donations appreciated

Activities: great time to meet old friends and make new ones!!

Bring pictures! *Welcome New Guests to Our Community*

Sponsored by the Jewish Federation of Greater Rockford

Co-sponsored by:
Congregation Ohave Shalom
Temple Beth-El

September Oneg Committee

September 2

No oneg

September 9

Susan and Jay Kamin

Carol and Terry Gordon

September 16

Noa Levy Bat Mitzvah

September 23

S'more Shabbat

September 30

Brina Grigg

Norman Bork

Marian Peters

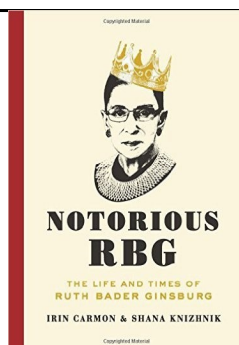
The Temple
Beth-El
Family greatly
appreciates and
thanks our Oneg
Hosts for helping to
make our Services
more meaningful
and offering an op-
portunity for us all
to mingle and
socialize.



Jewish Federation Book Discussion

Sept 25, 2016 at 2:00 pm.

At the home of
Connie and Jerry Paris
134 Callaway Cove
Loves Park, IL 61111



NEW YORK TIMES BESTSELLER

"The authors make this unassuming, most studious woman come pulsing to life. . . . *Notorious RBG* may be a playful project, but it asks to be read seriously. . . . That I responded so personally to it is a testimony to [its] storytelling and panache."— Jennifer Senior, *New York Times*

Supreme Court Justice Ruth Bader Ginsburg never asked for fame—she has only tried to make the world a little better and a little freer. Taken from Amazon.

This will be an exciting book for discussion. She exemplifies Jewish values and values human rights for all. The book contains parts of her legal opinions, briefs, and photographs of her life.

Kindle; Hard Cover; Audio CD. The paperback is not out yet.

Please RSVP: 815-399-5497 or rockfordfederation@sbcglobal.net

September Birthdays & Anniversaries

Adults

David Dietz 9/1
Ashley Soriano 9/4
Genevieve Rubin 9/6
Elizabeth Bernstein 9/9
Jerry Grubb 9/9
Jack Simon 9/9
Tim Sage 9/11
Warren Goldsand 9/15
John Huss 9/17
TL Sievers 9/17
Karen Zussman 9/18
Marc Soriano 9/21
Patty Kaufman 9/26
Wendy Huss 9/27

ANNIVERSARIES

Rabbis Shlomo &
Binah Wing 9/3/00
Jeffrey & Diana Behr 9/5/81
John & Wendy Huss 9/8/90
Ellen & Herb Deutsch 9/9/61
Alan Foss & David
Larico 9/15/95

Children

Noa Levy 9/17/03
Aidan David Quimby 9/20/07
Carter Bagne 9/29/12



With great pride and much love,
we invite you to share our joy
when our daughter
Noa Rachel Levy
is called to the Torah as a Bat Mitzvah

Saturday, 17 September 2016
ten o'clock in the morning

Temple Beth-El
1203 Comanche Drive
Rockford, Illinois 61107

Kiddush Reception to follow



YAHRZEIT LIST

If you are interested in having your loved one's name on the Yahrzeit list, please call Joyce in the Temple Office, 398-5020

Read Sept 2

Jacob Hoffman
Belle Simon
Eleanor Molton
Arlene Rosenson
Sylvia Deutsch
Mary Muss Picus
Ida Wolfson

Read Sept 9

Michael Karakoz
Fanny Rosenthal
Solomon Horwitz
Benjamin Schaider
Evelyn Rosenson
Joseph Epstein
Morris Rosenbloom
Albert A. Liebovich
Morris Sklar
Evelyn Marcus

Read Sept 16

Abe Rosenbloom
Esther Shanhouse Goldman
Max Daniel
Eleanor Haiken
Velma Majempsey
Bessie Tzinberg
Maurice E. Nathan
Edward Aaron Price
Anne Levy
Fred Marcus
Jack Mandell
Shirley Bagus
Reymond Berney
Ruth Halle Lustig
Rose Seidler Lesser

Read Sept 23

Sidney I. Sachs
Lewis Sax
Porter Lans
Louis J. Shanhouse
Constance Polcek Cohen
John Majempsey
Sam Bamberg
Anne Goldsand
Bess Dobrowsky
Jean Brady
Jennie Krojanker
William Marcus

YAHRZEITs cont.

Read Sept 30

Louis Levy
Martha Roth
Carole Cohen Garrison
Russell Goldman
Herbert Jerome
Louisa Stone
Leah Z. Chemerow
Diane Mendeloff
Judge Max Reicher
Nancy Ruthe Hutchison
Harry Miller
Marston Busch



MEMORIAL BOARD

Honor the memory of your loved ones by placing their names on the board in our memorial alcove. Please supply the Temple office with the name, date of birth and date of death. The minimum donation is \$200. The light alongside each name is lit every year to mark the anniversary of the death, and the name appears in the annual memorial book.



CONTRIBUTIONS TO OUR FUNDS

Landscaping Fund

In memory of Karen Kaplan
-Milly Kaplan

In memory of Judy Goldman
-Arturo and Susan Manas

Sheldon Liebovich Fund

In memory of Kay Nordell
Fuehrer
-John and Katherine Rosenbloom

Unrestricted Donations

In memory of William A. Feder
-Susan and James Slobard

In memory of Virginia
Rosenbloom

In memory of Abe Rosenbloom
In memory of Morris Rosenbloom
-John and Kathy Rosenbloom

Thank You.....

The Temple has been the recipient of donations from the Temple Family in the name of many funds in order to supply much needed money for worthwhile programs and projects. We would like to spotlight a couple of these funds.

The Robert and Joel Garten Youth and Scholarship Fund is to provide camperships for religious school students. This fund is administered by the Education Committee and the Rabbi.

The Michael Dermer Religious School Fund was established for the purpose of raising money to support religious school activities. This fund is used to provide enrichment programs, scholarships and youth activities.

Landscaping Fund provides funding for enhancements to our grounds.

Sheldon Liebovich Fund for Families in Crisis provides funds for Temple families who are in need at the discretion of Temple leadership.

Rabbi's Discretionary Fund provides for the Rabbi to purchase necessary items for the Temple or to help those in need, at her discretion.

Cy Sachs Fund provides funds to be used for community-wide projects.

Hannah & Herbert Saal Fund provides funds for the betterment of Temple Beth-El.



TEMPLE BETH-EL SOCIAL ACTION

*****FALL COLLECTION DRIVE IS UNDERWAY*****



Help us as we help two local groups within our community

#1 A group of local individuals whose goal is to bring comfort to the homeless population within our community create SLEEPING MATS, pillows, and personal care “ditty” bags. They meet about once a week at the local VFW Post to make the items.

HOW IT WORKS:

Plastic bags are spun into plastic yarn called “Plarn”. This waterproof yarn is used to make sleeping mats. The group crochets sleeping rolls that are used on top of the mats. Recycled fabric items such as t-shirts are used to make pillowcases. Additionally, personal care “ditty” bags, (made from plarn) are made and these are then filled with personal care items.

#2 The **Rock River Food Pantry** is currently in great need of plastic bags and brown paper bags as well as personal care items.

TEMPLE BETH-EL COLLECTION ITEMS:

Plastic Shopping Bags (thin ones from the grocery stores)

Brown Paper Bags

Yarn

T-Shirts (gently used or new)

Clear Duct Tape

Personal Care Items such as: toothbrushes, toothpaste, dental floss, deodorant, bath soap, shampoo, hair combs)

(Monetary Donations made out to Temple Beth El are always welcome as well)

****BINS ARE IN THE FOYER THROUGH SEPTEMBER!!**

LET'S SEE HOW QUICKLY WE CAN FILL THE BINS!!!!



Memorial and Tribute Donation Form



From:

Name: _____

Address: _____

City: _____ State _____ Zip: _____

For: (check one and fill in names as appropriate)

☐ In Memory of: _____

☐ Speedy Recovery to: _____

☐ Congratulations to: _____

☐ In Honor of: _____

☐ Other: _____

To: Send the acknowledging card : ☐ Same as from, or: Name: _____

Address: _____

City: _____ State _____ Zip: _____

Donation:

☐ Triple chai (\$54)

☐ Double chai (\$36)

☐ Chai (\$18) ☐ \$10

☐ \$4 (Min.)

☐ Other: _____

Fund:

☐ Garten ☐ Powell ☐

Lazarus ☐ Dermer ☐ Building ☐

Woodruff ☐ Rabbi's Discretionary

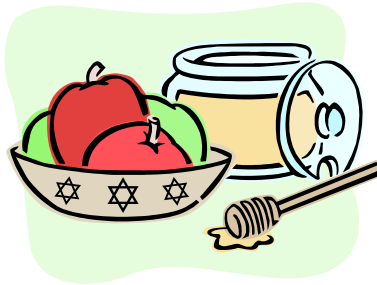
☐ Pap ☐ Kupperman ☐

Landscaping ☐ Gifts&Flowers

☐ Sachs ☐ Liebovich Fund

☐ Other: _____

TEMPLE BETH-EL
INVITES YOU
TO JOIN US FOR
Erev Rosh Hashanah Dinner



Sunday, October 2, 2016 6:30PM

\$10 per person, \$5 for children 10 and under,
Children 2 and under no charge

Menu: Brisket, matzo ball soup and kugel will be provided.

We ask that each family bring a dish to pass.

A-P bring a dessert Q-Z bring a side dish/salad

Dinner will be served promptly at 6:30 pm to allow time for cleanup before 8:00 pm services.

Open seating unless prior arrangements have been made.

Please RSVP by Tuesday, September 27th

Erev Rosh Hashanah Dinner

Name _____

of adults _____ X \$10 ea = \$ _____ #of children 10 and under _____ X \$5 ea = \$ _____

Total amount enclosed \$ _____

Please make checks payable to Temple Beth-El and send with this form to Temple.
Your check is your reservation.

Temple Beth-El 1203 Comanche Dr. Rockford, Illinois 61107 815-398-5020



TEMPLE BETH-EL MINUTE WITH A MEMBER

Dear TBE Friends:

This "Minute with a Member" will feature the Towne family. Please take a few moments to learn a bit more about them. Below are answers to a few questions. We hope you will enjoy getting to know them a little better!.

Tell a little about your family:

We are originally all born in Los Angeles, CA and moved to Rockton, IL in 2011. Amy loves to cook, Jordan loves to fix things, Madeline loves to play guitar and Eloise loves to draw pictures.

Your favorite Temple activities and Judaic holiday/food:

Our favorite Temple activities are listening to Cantor Stuart sing during high holidays as he reminds us of the Cantors back in CA.

Our favorite Judaic holiday is Passover and favorite food is Macaroons.

Your motto in life:

Our motto in life is to "Never give up."

What do you do for fun:

We love going to the Farmers Market in Downtown Beloit, WI.

If you could take two weeks off from all your responsibilities: We would go to Hawaii and do

nothing because that is all you need to do to enjoy Hawaii.

The best advice we have received is: Follow your dreams, perception is reality and don't eat the yellow snow.

Our favorite books are: Jordan: Devil in the White City by Erik Larson, Amy: Intensity, Dean Koontz, Madeline: Miss Peregrine's Home for Peculiar Children; Library of Souls and Eloise: I Funny, James Patterson.

I have always wanted to: Jordan would like to have my own Bicycle and Stereo Store, Amy has always wanted to be Forensic Detective, Madeline wants to be a professional guitar player and Eloise wants to be an author/artist.



GRTY NEWS

Submitted by:
Co-President
Jamie Zussman

The summer is coming to an end, but that is only a good thing because everyone's favorite part of the school year has begun, GRTY! The youth group has a full year of great times ahead

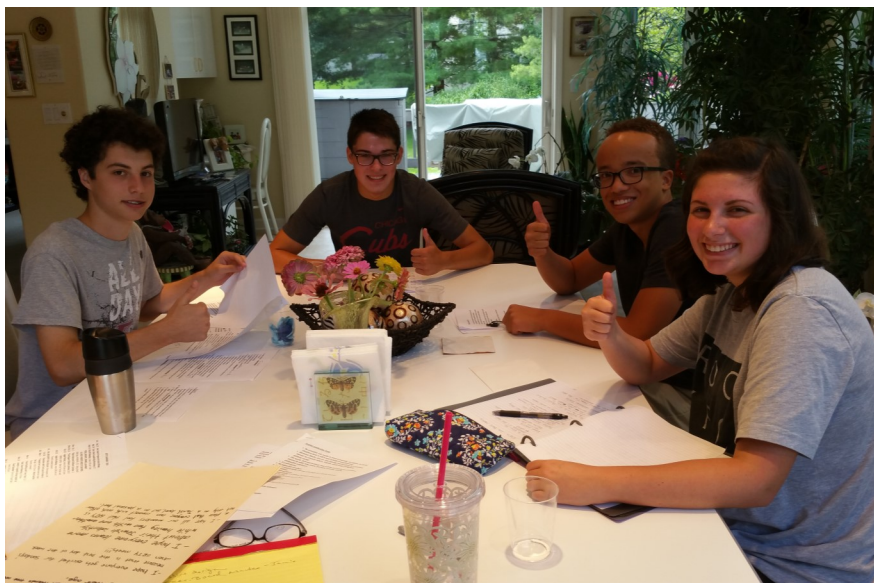
of us, and we are so excited for all the fun events coming up.

All of the GRTYites had special, fun filled summers, but all of the old members along with the new members are ready to assemble to have an extremely successful year. In our Kick-off Meeting, the Executive Board is going to explain all of the amazing events we will be having throughout the year. The Kick-off will be on September 25th at noon in the lower level of the Temple. There will be a FREE pizza lunch along with delicious desserts, and then the Exec. Board will discuss how all the teens can make Jewish friends of all ages, learn about Jewish values and make and eat some really yummy Jewish foods all throughout the year! Of course there will be time to ask and answer questions as well.

This upcoming year, our Executive Board is an amazing team of teens who will make the 2016-17 year fantastic. Adam Gesmer and Jamie Zussman will be fearlessly leading the youth group as Co-Presidents. The Membership and Communications Vice President, Ben Levy, will make sure that all members, new and old, are included and having the most fun possible. Ben Kopnick will be the Religious

and Spiritual VP who will be leading all things relating to Judaism from small readings at the beginning of events, to leading prayers, to being "Rabbi Kopnick" when the Youth Group starts preparing for their Friday night service. Aaron Barenbaum will be the Media and Technology VP to keep all members up to date over all kinds of social media. Last but certainly not least, our class representative will be Zachary Hergert to finish out a great group!

All of the Exec. Board is excited to begin preparing for the full year of events from apple picking, to our Friday night service, to our Chicago trip this upcoming year! GRTY hopes to see all returning faces along with new faces at our kickoff event because we are so excited for this year to begin. All new teens who decide they want to be a GRTYite will be comfortable and feel like an instant friend to their fellow GRTYites. Thank you and enjoy the rest of your summer while getting excited for a new year of GRTY to begin!



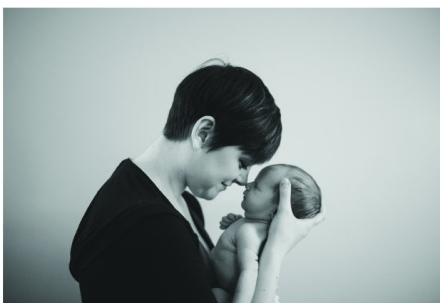
The GRTY Exec. Board has already been hard at work preparing for the September 25th kick-off event

Mindy Joy

PHOTOGRAPHY

PORTRAITURE EVENT COMMERCIAL

Providing photographic coverage in Rockford and the surrounding areas.



Mindy Joy Young
Call me: 815.985.4005

Look up info & Pricing
mindyjoyphotography.com

Inquire about dates & reservations
mindy@mindyjoyphotography.com

Friends of Temple Beth-El

It's a.... Car Mitzvah



Our car mitzvah donation program has earned over \$40,000 in the last 8 years. This comes about through the incredible generosity of our congregants. Jerry Paris has sold his Midas Auto Repair facility on North Main St. after being in business for 38 years. It is now owned by Butitta Bros, and the manager's name is Neil. **The new organization has agreed to continue the car donation program under the same arrangement as before.**

Our car mitzvah donation program has earned over \$40,000. in the last 8 years.

Please contact the new manager at 815-962-7914, and he will insure that Temple is properly rewarded. If you have any questions, please call Jerry at 815-222-6016.
Thank you for your support.

**3012 North Main Street Rockford, IL 61103
815-962-7914**

Huge Selection of Stunning Wedding Invitations



- ✦ Graduations ✦
- ✦ Bar/Bat Mitzvah ✦
- ✦ Mis Quince Años ✦
- ✦ Social Parties ✦
- ✦ Anniversaries ✦
- ✦ Business Cards ✦

5411 East State St. • Rockford, Illinois
815-399-3837 email: rrprint@att.net

1478590

Brian Thomas Photography

Bar/Bat Mitzvah Specials

815 395-1105

brianthomasphotography.com

OFFICE: 1.815.637.0165
CELL: 1.815.222.6076
FAX: 1.815.282.2268
E-FAX: 1.815.231.8414
EMAIL: cparis@GoGambino.com



Connie Paris
BROKER
CRS, GRI, e-PRO
3815 N. Mulford Rd
Rockford, IL 61114

gambino
REALTORS

GoGambino.com

Compliments of Sundberg Funeral Home, Ltd.

Darryl Johnson
Funeral Director
215 North 6th Street
Rockford, Illinois
962-7743



LOCK DOCTOR
SINCE 1974

Transponder
Keys

24 HOUR
EMERGENCY CAR OPENING
& KEY SERVICE
foreign autos our specialty
Lic. # 0191-000247

**COMPLETE
LOCKSMITH
SERVICE**

WE DO JOBS NO OTHER SHOP CAN
AUTO • HOME • COMMERCIAL • SAFE

FAST, COURTEOUS SERVICE
LICENSED, CERTIFIED
& BONDED

874-4030
OR CALL 968-4751

3437 SOUTH BEND RD. • ROCKFORD
MASTER LOCKSMITH



BRING ON THE BOOKS!

For the past eight years, the TBE Book Sale committee has been accepting your used and/or new books for listing online or for the Rummage Sale. To date **we have raised over \$18,000!**

We accept your donations throughout the year. There is a bin in the classroom hallway (to the right of the gift shop) for you to place your donations.

ARTALÉ
WINE CO.

WINE • BEER • LIQUOR
CATERING: WINE PARTIES, DINNERS, PRIVATE IN-HOME TASTINGS
6876 SPRING CREEK RD. SUITE 128, ROCKFORD, IL 61114 815.877.WINE

See our selection of Kosher Wines too!

PET SITTING BY TINA

Tina Sievers
4921 Rolex Parkway
Loves Park, IL 61111

Providing Quality
Pet/House Sitting
since 2004

Phone: 815.742.4537
E-mail: tsievers1956@yahoo.com



Coming Attractions

October 2016

Mon. 3rd Rosh Hashanah
Sat. 8th Havdallah Service, pizza dinner and strategic planning meeting
Wed. 12th Yom Kippur
Sat 22nd Strategic planning meeting at Pearlman home
Sun. 30th Adult Ed; Laura Frankel Strategic planning meeting at TBE

November 2016

Sat. 5th Art Auction at Anderson Gardens
Sun. 13th Adult Ed: Jewop Acapela
Sat. 19th Joe Gesmer Bar Mitzvah

December 2016

January 2017

February 2017

March 2017

April 2017

May 2017

Sat. 27th Madeline Towne Bat Mitzvah

June 2017

July 2017

August 2017

September 2017

Tentative Date *
Temple Board

Meets the 2nd Wed. each month
Library 7:00 PM

We hope this page of Coming Attractions helps you plan ahead for activities at Temple Beth-El. Please understand that some dates and times might be tentative and will be updated each month as dates get closer.

Have a Date to add?
Well!
Jayskl@aol.com

GRTY 2016-2017 Calendar

Sept. 25 Kick Off Meeting: noon-1:45 p.m. Temple lower level
PIZZA, DESSERT, DRINKS, provided! ALL NEW PARENTS NEED TO BE PRESENT FOR REGISTRATION, SIGN Ups, PAYMENT, ETC. Bring checkbook please.

***Means you can earn service hours**

Advisors: Nanci Soriano H: 654-7677 cell: 222-9626

Lauren Lamont: cell: 988-3727

RSVP to ALL activities quickly please even if you can't attend
Dues: 7-8 graders: \$25 (2nd child \$20)
9-12 graders: \$40 (2nd child \$25)

HELP WANTED: CARING COMMITTEE

The Caring Committee was formed to provide a meal(s) to a member in the event of a birth, death or illness. Anyone interested in being on the Caring Committee list or is interested in providing a ride to a Temple function, please contact Carol Gordon at 815-398-4214 or cggordon50@hotmail.com.

Membership

Do you know of any unaffiliated Jews looking for a congregation?
If so, contact Elisa Whitman, membership chairperson at 815-988-2134

PLANT A TREE IN ISRAEL
Commemorate happy occasions...
births, engagements, marriages, anniversaries, graduations or memorialize a loved one.
"A tree lives on forever in our sacred land"

Call Carol Gordon
398-4214

or email requests to:
cggordon50@hotmail.com
Effective April 1, 2013 the price will be
\$18.00

sponsored by
Sponsored by Jewish Federation of Rockford

Torah
Study Group
Saturday Morning 10:00 AM

The Tree of Life

Remember a loved one or celebrate a wonderful occasion by noting it forever on the Temple Beth-El Tree Of Life in the foyer. Contact the Temple office for details.

The Temple Bulletin goes away to College....

If you have a student heading off to college, we would like to send him or her a copy of the Temple Bulletin. Let them have one more connection to home while they are away. All we need are name and address, and we will do the rest. Give Joyce a call in the office, and add one more piece of mail from home for your student.

**Visit the Temple Beth-El
New Web Site Address...**

<http://templebethel-rockford.org/>.

Check it out!

The Yiddish Corner

SHMOOS

Shmooz

Friendly, aimless talk. Chitchat

They are such nice people. I can just sit and *shmooz* with them for hours.

On the Lighter Side...

Going Deaf

Ginsburg was convinced that his wife was getting deaf. She refused to go to an audiologist, so he asked the doctor what could be done.

"Start at the door of the room. Tell her something in a normal tone of voice. If she doesn't respond, move a little closer, still using a normal tone of voice. That should tell you just how deaf she is.

Ginsburg saw his wife was doing the dishes. He said, "I love you my darling."

No response.

He moved a few steps into the room and repeated, "I love you my darling."

Still no response.

He moved closer, until he could almost touch her and repeated, "I love you, my darling."

With this, his wife turned around and said, "For the third time, I love you too."

Hearing Aid

Goldblatt was showing off. He told his friend, "I bought a hearing aid yesterday. It cost me two thousand bucks, but it is state of the art."

"What kind is it?" his friend asked.

"A quarter of twelve," was the answer.



September 2016 Religious Services

September 2
Erev Shabbat Service 6:00 pm

September 9
Erev Shabbat Service 7:30 pm

September 16
Erev Shabbat Service 7:30 pm

September 23
S'more Shabbat Service 6:00 pm

September 24
Selichot Gathering 8:30 pm
Service 9:30 pm

September 30
Erev Shabbat Service 7:30 pm

Temple Beth-El Leadership

Rabbi	Binah Wing
President	Jim Gesmer
President Elect	Robert Levy
V.P. Communication	Ellen Salley
Bulletin Publisher	Jay Sklar
Web Maven	Harvey Melamed
V.P. Community	Karen Zussman
V.P. Finance	Brina Grigg
Treasurer	Sharon Goldsand
V.P. Ways & Means	Mary Roufa
V.P. Education	Lauren Lamont
School Principals	Goldie Pekarsky & Adrian Grubb
V.P. Religious Functions	Andrea Levey
V.P. Building & Grounds	Jordan Towne
Jewish Federation Rep.	Ellen Dietz
Past President	Jay Sklar

The Temple Beth-El Bulletin is a monthly publication of Temple Beth-El, Rockford, Illinois. Items for the bulletin should be submitted to the Temple office. Typewritten is acceptable, but text format on a computer disk or e-mailed to the publisher, Jay Sklar jayskl@aol.com, is preferred.