

TEMPLE BETH-EL



BULLETIN

October 2016 28 Elul 5776 - 29 Tishri 5777

1203 Comanche Drive

Rockford, Illinois 61107 815-398-5020

Mission Statement: Temple Beth-El is a congregation of Jews and their families building a community committed to participation in all aspects of Jewish life. By community, we mean a group of diverse people who share a strong connection fostered by Temple Beth-El. By participation, we mean that all members will partake in and support the spiritual, cultural, educational and social life of Temple Beth-El.

Shana Tovah 5777

HIGH HOLY DAY SCHEDULE

Erev Rosh Hashanah

Sunday, Oct. 2
Service 8:00 pm

Rosh Hashanah

Monday, Oct. 3
Morning Service 10:00 am
Tashlich 2:30 pm

Kol Nidre

Tuesday, Oct. 11 Service 8:00 pm

Yom Kippur

Wednesday, Oct 12
Morning Service 10:00 am
Afternoon Services/Yizkor/Neilah 3:30 pm
Break-the-Fast approx. 6:30 pm

Sukkot Service

Sunday, Oct. 16 Service 11:00 am

Simchat Torah Festival Service

Sunday, Oct. 23 Service 11:00 am

Chaverim,

As I was preparing to write my bulletin article for this month, I decided to look back at some of my archives for inspiration and see what some of my October topics had been. What I found, by and large, is that by the beginning of October the High Holy Days are almost always behind us. Thus, I've used this space to review the messages that I tried to convey in my sermons for that year. This year, Rosh Hashanah hasn't even happened yet so sharing my sermon topics before I give them just doesn't feel right. So, what to talk about? Well, I'd like to make a plug for two lesser attended services in our congregation's life – Sukkot and Simchat Torah. While both of these holidays begin on Sunday evenings (hint: they always start on the same night as Rosh Hashanah), we've decided to celebrate them a little bit early – Sunday morning to be specific. Sukkot will be celebrated on October 16th at an 11am service, and Simchat Torah will be celebrated one week later on October 23rd, also at 11am. I hope that you will make the time to come to these holidays rather than just think of them as "religious school services." They really are important for the entire Jewish community.

But beyond that, the meaning and the messages of these holidays are quite lovely and relevant. Sukkot celebrates our connection to nature and the environment. Our tradition challenges us to live outside in small, frail booths. One thread of tradition connects the Sukkah to booths that the Israelites lived in while wandering in the wilderness. The Torah also connects the holiday of Sukkot to the celebration at the end of the year's harvest. At the core of the celebration in either case is an understanding that human beings are closely connected to the environment around us. Sukkot is supposed to be a joyous holiday to help free us from the



From Rabbi Binah Wing

INSIDE THIS ISSUE:

| | |
|-----------------------------|--------|
| President's Message | 3 |
| Service Schedule | 14 |
| From the Board of Directors | 2 |
| Religious School News | 4 |
| Friends of Temple Beth-El | 11, 12 |
| Birthdays & Anniversaries | 5 |
| Yahrzeits and Contributions | 6 |
| Calendar | 15 |

solemn nature of the Days of Awe.

One custom that we used to do in honor of ideas of harvest and being attuned to nature is to bring baskets of fruit to the Temple on Sukkot. We would then take these baskets of fruit to the pantry where they would be delivered. Fresh fruit is often in short supply so this is especially nice. This year, let's re-start that custom. Please bring your baskets of fruit and attend our celebratory Sukkot service.

At the end of Sukkot, which is actually a 7-day holiday, we have the second of the two holidays that we celebrate at Temple Beth-El after the High Holy Days are over: Simchat Torah. This is perhaps one of the most joyous holidays on the Jewish calendar. The message is so simple, yet so profound. On this holiday, we celebrate Torah. We take the Torah into our arms, and we dance with it. We pass it from parent to child, child to parent and from friend to friend. All the while we sing. Take a minute and imagine dancing a hora and singing while holding the Torah in your arms. These are the moments that help strengthen Jewish identity.

During this service of joyful celebration, we read from the end of Deuteronomy and then open up a second scroll and read the first words of

Genesis. In addition, we invite up to the bimah our youngest children in our religious school to be consecrated and blessed as they begin their formal Jewish education.

It is my hope that you will make the celebration of these two holidays a part of your observance, and, in that way, we can fully appreciate together the beauty and wonder of the Jewish season of holy days and festivals.

Shana tovah um'tukah, a good and sweet year to all,

Rabbi Wing

From the Temple Board.... By Secretary Ellen Salley



The Temple Board met on September 14th. Sharon led the D'Var Torah and discussed how Rosh Hashanah came to be and the meaning of the holiday. Rosh Hashanah began originally in the month of Tishrei instead of the month of Nisan.

Jim reported on the status of the strategic planning meetings and that Wendy Huss was going to set up a Sign Up Genius so that Temple members could register on line for the meeting they would like to attend. He also reported that Jay Sklar said we are looking for someone to take over the Temple gift shop.

Rabbi has been busy meeting with the Choir and Stuart Bard to get ready for the High Holy Days. She also has been busy with B'Nei Mitzvah tutoring, conducting a memorial service for Andrea Gotthalf and completing the conversion process for Joy Schneider. Rabbi reported that Tony and Marilyn Toback left a Legacy Pledge to Temple which will go to the Foundation.

Sharon reported that the Temple is still in good shape with our cash on hand for our needs at the present time. Brina reported that as of September 9th, we had 69 pledges with 30 paid in full, which is why our cash on hand is good.

The Religious Functions committee has preparations for the High Holy days underway. The Rosh Hashana dinner will be headed by Connie Paris, with help from Ronit Golan. Andrea reported that she hired Metro Security for the holidays. Sukkot and Simchat Torah services will be held on October 16th and October 23rd, respectively.

Jordan reported that he is getting bids to fix the cabinet in the kitchen. He will also be looking into finding a new roof for the Sukkah.

Lauren reported that Religious school started on September 1st. The GRTY executive board has met to plan the kick-off on September 25th and for leadership training.

Karen reported that we have two new families that have joined the Temple. The board passed a motion to donate money to the Rock River Valley Food Pantry as part of the High Holiday food drive.

Mary reported that the art auction committee continues to meet to get ready for the evening.

Jay Sklar reported that the kitchen lock will be changed on September 25th.

Ellen reported that the Federation participated in the Ethnic Festival on August 27th. The Jewish Community Picnic was successful and well-attended. The next book talk will be on September 25th. The Campaign kick-off dinner will be on November 20th at Mauh-Nah-Tee-See Country Club.

Temple has left over hot dogs from Food-A-Rama that will be available for sale after the S'More Shabbat on September 23rd. The board wished Mary Roufa a speedy recovery from her surgery.



Temple Beth-El has been a very busy place during the past few weeks as we approach the High Holy Days. The Temple choir has been hard at work getting ready to sing for us.

Having heard them several times while they were rehearsing, I can tell you that they are sounding great, as usual. Our Vice-President of Religious Functions, Andrea Levey, has been working diligently to make sure that everything is in place for services. Her job duties have included finding babysitters for services. And, of course, Rabbi Wing has been extremely busy getting ready for services.

On behalf of the Temple Board of Directors, I want to wish the entire congregation Shana Tovah. May the year 5777 be a sweet and healthy year for all of us, and may we all be sealed in the Book of Life.

Sadly, the Temple family recently lost longtime member and leader of our community Tony Toback. Tony will be greatly missed, as he meant so much to so many of us. I am pleased to announce that several years ago, Tony and Marilyn made a Legacy Pledge to Temple Beth-El in their wills. Because our congregation meant so much to Tony and Marilyn, Temple Beth-El will soon receive a generous gift from them, which will go to the Foundation.

Please contact Brina Grigg if you are interested in making a Legacy Pledge. Making a Legacy Pledge is an excellent way to help to ensure the strength and vitality of Temple Beth-El. It is also a great way to honor past leaders of our congregation, such as Tony and Marilyn.

Finally, please be sure to attend one of the upcoming Strategic Planning sessions. The sessions are scheduled to take place on October 8 at 7:00 P.M. at the home of Mary Roufa, October 22 at 7:00 P.M. at the home of Lisa and Larry Pearlman and October 30 at 12:30 P.M. at Temple Beth-El. Your input in the Strategic Planning process is essential. Please register to attend one of these sessions either via the Sign-Up Genius website or by contacting Joyce at the Temple office.

Jim

2016 WAS ANOTHER MAGICAL SUMMER



Thank you for your partnership;
together we are building the
Jewish future.



OSRUI

Roots to grow. Wings to fly. Friends forever!

10 Minutes of Torah

UNION FOR REFORM JUDAISM'S
DEPARTMENT OF LIFELONG JEWISH LEARNING

The Union will send you a one page e-mail
each day on a topic of Jewish Interest.
All you need to do is find 10 minutes a day
to "do Torah."

Sign up by logging on to
WWW.urj.org/Torah/Ten

SCHOOL DAZE

200 Words or Less...

By Goldie & Adrian



We began our school year on September 11 with an abbreviated morning followed by the annual joint picnic, which was enjoyed by all! Good food and fellowship!

Our school welcomed six new students this year! We will officially welcome the families at our Simchat Torah service on Sunday, October 23. We also will be handing out prayer books to the upcoming B'nai Mitzvah students so mark those calendars!

We recently celebrated Noa Levy becoming a Bat Mitzvah on September 17. Mazel Tov to the entire family!

Music classes will begin on September 25 with Barb Simon and Mitch Kopnick, and cooking classes are being planned with Ronit Golan. Yum, yum!

Sukkot services will be on Sunday, September 16. We look forward to everyone sharing this holiday with us!

Thank you to all who signed our volunteer sheet for activities through the year. We couldn't do the things we plan without your needed help!

Goldie and I would like to take this opportunity to wish each and everyone of you a very healthy and happy New Year!

Till next time, Shalom.

*Mazel Tov to
Allison Sage and Ken Braswell
On the occasion Of their marriage*

Chef Laura Frankel

Chef Laura, following in the footsteps of Jewish traders who introduced chocolate to France, will give participants a chance to learn about—and taste—some of the world's best chocolates and chocolate recipes.



**Sunday, October 30 at
10:00am breakfast /
10:30 am program
Temple Beth-El,
1203 Comanche Dr. 61107**

There is no cost to attend, and everyone is welcome

Sponsored by the Adult Education Committee

**Please RSVP to Temple at 815-398-5020
About Laura Frankel**

Laura is the author of JEWISH COOKING FOR ALL SEASONS and JEWISH SLOW COOKER RECIPES. An avid farmer's market and Green market supporter, Laura gives demos, teaches classes using market produce and gives shopping tours to local groups in Chicago at the famed Green City Market.

Laura was the Executive Chef for Wolfgang Puck Kosher Catering at the Spertus Institute for Jewish studies in Chicago. Currently she has her own catering business, Pickled Tongue Catering and Foods. Her website is: www.pickledtonguefoods.com. Before committing herself to her culinary passion, she played both alto and baritone saxophones. She taught and played professionally. Laura has three children—Zachary, Ari and Jonah—who all love to cook and eat great food!

October Oneg Committee

October 7
Pam Reum
Rose Gulatto
October 14
Mary and Brian Shore
Lisa and Mitch Kopnick
October 21
Adrian and Jerry Grubb
Connie and Jerry Paris
October 28
No oneg

The Temple
Beth-El
Family greatly
appreciates and
thanks our Oneg
Hosts for helping to
make our Services
more meaningful
and offering an op-
portunity for us all
to mingle and
socialize.



October Birthdays & Anniversaries

Adults

Wendy Young 10/7
Nancy Feinstein 10/7
Susan Feder Slobard 10/12

Children
Ethan Anton 10/15/09
Ella Holmstrom 10/16/03

Adam Gesmer 10/13
Leda Nevler 10/14
Gail Bernstein 10/14
Jason Soriano 10/14
Adrian Grubb 10/15
Judy Weiss 10/15
Sheldon Weiss 10/15
Lauren Lamont 10/18
Katie Lamont 10/19
Aaron Gesmer 10/19
Andrea Hartman 10/21
Wendy Rubin 10/21
Aaron Einhorn 10/23
Jack Holmstrom 10/26
Ian Behr 10/27
Sam Schneider 10/27
James De Witz 10/29
Ronit Golan 10/31

ANNIVERSARIES
Mary & Brian Shore 10/15/88
Andrea & Mitchell Busch 10/15/88
Ben & Marissa Holmstrom 10/16/99
Rachel & Alex Bagne 10/20/13



HELP WANTED

WE ARE LOOKING FOR A FRIENDLY
INDIVIDUAL TO GREET AND HELP VISITORS
AND CUSTOMERS IN OUR

TEMPLE GIFT SHOP

CONTACT THE TEMPLE OFFICE
FOR ALL THE DETAILS.

The Temple Beth-El Gift Shop



GIFT SHOP HOURS

Monday—Friday, call the office
Sunday 10am - noon*

*Open Sundays when school is in session.

If you need to visit the shop at another time, please call
the Temple office (398-5020) or Pam Reum (979-9497)

YAHRZEIT LIST

If you are interested in having your loved one's name on the Yahrzeit list, please call Joyce in the Temple Office, 398-5020

Read Oct 7

Shepard Blumenthal
Joseph "Tuss" Ellman
Molly Tobias
Max Gottschalk
Ida Keeshin
Henry M. Gabrys
Benjamin Freifeld
Nat Balkin
David Turcott
Sarah Sax

Read Oct 14

Sheldon Liebovich
Melvin Newman
Margaret Fruchtnicht
Mildred Nelson
Morris Picus
Kate Rosenzweig
Jacob Meyer Bard
Maurice Nusbaum
Mildred R. Miller
Howard Hart
Charles Keeshin
Charles Shanhouse

Read Oct 21

Cina Rosenblatt Wolff
Alfred Abraham Busch
Benjamin Bagus
Victor Recht
Ida Labowitz
Ida Levy
Sonia Fischer
Ida Sklar
Moritz Schaap
Ida Milsk Wachtel
Sterne Roufa

Read Oct 28

Mollie Leopold
Irving Roir Roth
Sophie Wiener
Samuel Patlove
Lottie M. Goldman
Alex Kovalsky
Lillian Kupperman
Leanora Feder
Dr. J. Harry Bendes
Gertrude Block

YAHRZEITs cont.

Samuel Block
Carolyn Bornstein
Earl E. Cazel
Ilene Helfand
Lorraine Shore



MEMORIAL BOARD

Honor the memory of your loved ones by placing their names on the board in our memorial alcove. Please supply the Temple office with the name, date of birth and date of death. The minimum donation is \$200. The light alongside each name is lit every year to mark the anniversary of the death, and the name appears in the annual memorial book.



CONTRIBUTIONS TO OUR FUNDS

Garten Fund

In celebration of a new chapter in the life of Harvey and Natalie Share
-Brina Grigg

Hospital & Floral Gifts Fund

In memory of Tony Toback
-TL Sievers

Landscaping Fund

In memory of Tony Toback
-Judy and Chuck Picus
-Milly Kaplan
-Marc and Karen Zussman
-Faye Marcus

In memory of Ruth Einhorn
-Barbara and John Holmstrom

In honor of Joy Schneider's conversion

In honor of Noa Levy's Bat Mitzvah

Mazel Tov to the Sage family on Allie Sage's marriage to Ken Braswell

Mazel Tov to the Bagne and Roufa family on the birth of Julian

In memory of Tony Toback
-Nanci and Marc Soriano

In memory of Cindy Speece
-TL Sievers

Rabbi's Discretionary Fund

In memory of Tony Toback
-Arthur and Kathy Rettig

In memory of Sheila Douglas
-Marian Peters

In memory of Paul L. Sievers
-TL Sievers

Schaider Building Fund

In memory of our loving father and Papa

-Susan, Jay and Laura Kamin
Ilena, Moran, Ella and Maya Tairy

In memory of Gordan Grubb

In memory of Tony Toback
-Jay and Susan Kamin

Sheldon Liebovich Fund

In memory of Tony Toback
-Brina Grigg

Unrestricted Donations

In memory of Tony Toback
In memory of Ruth Einhorn
Best wishes to Joy and Steve Schneider
-Elisa Whitman

NEW PLAQUES IN OUR MEMORIAL ALCOVE :

**In memory of Jerry Dermer
Donated by
Brenda Dermer and family**

**In memory of Joyce Ruthe
Donated by the Ruthe family**

Thank you for remembering your loved ones in our Memorial Alcove.

CONDOLENCES TO:

Harvey and Kim Einhorn on the passing

of Harvey's mother, Ruth

-

Nina Toback and Marc Toback
and families on the passing
of their father, Tony

How Rosh Hashanah Became New Year's Day

Taken from an article by Michele Alperin which can be found on the website: www.myjewishlearning.com
Submitted by Sharon Goldsand

In the Torah, the beginning of the year was clearly set at 1 Nisan, in the context of a description of the first Passover. "The Lord said to Moses and Aaron in the land of Egypt: This month shall mark for you the beginning of the months; it shall be the first of the months of the year for you" (Exodus 12:1-2). This new year celebrated the creation of the Jewish nation through the redemption of the Israelites from Egypt. Nisan, as the first of the months, coincided with the beginning of Jewish national history

But it is surprising that the Torah made no mention of the new year at 1 Tishrei, which today is so central to the Jewish religious experience. The Torah's reference to 1 Tishrei is sparse altogether, describing a holiday characterized primarily by the blowing of a shofar. "In the seventh month, on the first day of the month, you shall observe complete rest, a sacred occasion commemorated with loud blasts. You shall not work at your occupations, and you shall bring an offering by fire to the Lord." The name "Rosh Hashanah" is not mentioned, nor is there a reference to its function as a day of judgment and anniversary of the world's creation. Yet by the period of the Mishnah at the beginning of the second century, the outlines of today's Rosh Hashanah holiday are clear; and discussion about the prayers of Rosh Hashanah appear as early as the teachings of the schools of Hillel and Shammai, which date to the first century CE.

Mishnah Rosh Hashanah 1:1 specifically defines Rosh Hashanah's "new year" status. "The first of Tishrei is the beginning of the year [rosh hashanah] for years, sabbatical cycles, and the jubilee." Although the function of this new year relate primarily to the agricultural cycle and the beginning of a new harvest year, the Mishnah also beginnings to assign to it conceptual and theological meaning. Sometime between the Torah and the codification of the Mishnah, the autumn new year gained ascendance, now transformed into a major

celebration, and the Nisan new year was left as a marker of the months and festivals in the calendar year. Although theories abound about the causes of this transition, the mechanics are lost in the web of historical change. The Talmudic rabbis analyze the text of the Bible as they argue about when the New Year should begin, yet different sets of verses yield different answers. Historians cite evidence from the ancient Near East, looking at the new years celebrated by neighboring peoples, but nothing is conclusive. Others look to archeology for support. But the truth remains murky.

Moving from the theories of Bible scholars to the interpretations of Jewish commentators, we see an acknowledgement of the existence of the two new years, Nisan and Tishrei, along with attempts to derive meaning from this doubling. Because Rosh Hashanah occurs at the beginning of the seventh month, counting from Nissan, Nachmanides (Ramban), a 13th century commentator, tied the two together by positing that the very process of counting tied Rosh Hashanah to the redemption from Egypt. This, suggests Ramban, is similar to the tie between the weekday and Shabbat that is also accomplished by counting: Just as we remember the Sabbath day by counting according to the first day of the Shabbat cycle, the second day of the Shabbat cycle [in Hebrew, the weekdays do not have names, they are numbered in

relation of the coming Shabbat], so we remember the Exodus from Egypt by counting the first month, and the second and third month from our redemption. For this is *not* the enumeration that we apply to the year, for the beginning of our year is in Tishrei, as it is written (Exodus 34:22), "the Festival of gathering, at the year-season," and it is written (Exodus 23:16), "at the going-out/changing of the year." Therefore, when the month of Nisan is called "first" and Tishrei "seventh," the meaning is: the first from the redemption and the seventh therefrom. And this is the meaning of "the beginning-one let it be for you." For it is not the beginning of the year. but the beginning *for* you," for it is thus-called in memory of our redemption. By attributing different yet complementary roles to the new years of Nisan and Tishrei, teachers of Torah have helped integrate perspectives of world, nation, and individual within the Jewish religion.

In the Torah, the beginning of the year was clearly set at 1 Nisan,

But it is surprising that the Torah made no mention of the new year at 1 Tishrei, which today is so central to the Jewish religious experience.

Memorial and Tribute Donation Form



From:

Name: _____

Address: _____

City: _____ State _____ Zip: _____

For: (check one and fill in names as appropriate)

☐ In Memory of: _____

☐ Speedy Recovery to: _____

☐ Congratulations to: _____

☐ In Honor of: _____

☐ Other: _____

To: Send the acknowledging card : ☐ Same as from, or: Name: _____

Address: _____

City: _____ State _____ Zip: _____

Donation:

☐ Triple chai (\$54)

☐ Double chai (\$36)

☐ Chai (\$18) ☐ \$10

☐ \$4 (Min.)

☐ Other: _____

Fund:

☐ Garten ☐ Powell ☐

Lazarus ☐ Dermer ☐ Building ☐

Woodruff ☐ Rabbi's Discretionary

☐ Pap ☐ Kupperman ☐

Landscaping ☐ Gifts&Flowers

☐ Sachs ☐ Liebovich Fund

☐ Other: _____



ART AUCTION

Sponsored by

Temple Beth El

Please join us on

Saturday Evening, November 5, 2016

at

Fresco's @ Anderson Gardens

*318 Spring Creek Rd
Rockford, Illinois*

Preview: 6:30 p.m.

Auction: 7:30 p.m.

Admission: \$18.00 per person

Cheesecake Bar, Coffee, Tea, Cash Bar

For more information call: Mary Roufa (815) 543-6520

Major Credit Cards Accepted

Featuring Art in All Media & Price Ranges

ART EXHIBITION & AUCTION

Name: _____ Phone: _____

Address: _____

City, State & Zip: _____

I cannot attend, but would like to make a donation to "Temple Beth El" in the amount of \$ _____

CHECK ANY SPECIFIC REQUESTS:

☐ Contemporary

☐ Sports

☐ South Western

☐ Impressionism

☐ Wildlife

☐ African-American

☐ Americana

☐ Seascapes

☐ Judaic

☐ Primitive

☐ Children

☐ Christian

Special Requests: _____

Please complete tearstrip, make check payable to "Temple Beth El" and return, to
1203 Comanche Drive • Rockford, Illinois 61107



As we enter into our High Holy Days, please consider making a donation!!

2016 Temple Beth-El Food Drive to benefit the Rock River Food Pantry



We will be collecting Non-Perishable food (with non-expired dates) during the month of October in the Temple Library

Current Needs the Pantry is requesting are:

Canned Fruit,
Applesauce,
100% Juice
Canned Vegetables
Pasta and Rice
Cereal
Peanut Butter
Tuna Fish

*Monetary donations are welcome and much appreciated!!
(Please leave checks in the Temple office made payable to Rock River Food Pantry)*

**Last year Temple Beth-El donated over 300 pounds of food and over \$1600!
*Let's try to beat our record this year!!***

GRTY NEWS

Submitted by:
Co-President
Adam Gesmer

GRTY had our annual kick-off meeting on Sunday, September 25 at Temple. It was a great feeling welcoming the new members of GRTY and reuniting

with the returning members, as well. At the kick-off meeting, the Executive Board explained some of the fun social activities that we will be doing such as the annual Laser Quest/ Sho Gun, the Chicago field trip that will include going to a museum and Comedy Sportz Theatre and the Pot Luck/Game night/Lock In at Nanci Soriano's house. In addition to this, GRTY's service activities at the Temple will include helping with the Rummage Sale, Food-A-Rama and the Art Auction. Some of GRTY's community social actions will be the two Soup Kitchens and the Puppy Wash.

This year's service project for GRTY is the Rock Valley Refugee Program. Amy Heilman, the program director, came to talk to us about this very special group of people and their needs. Refugees from Syria, Burma and other countries come here. Their children are enrolled in Rockford Public Schools, with most of them attending East High School and Lincoln Middle School. The Rock Valley Refugee Program needs help with personal hygiene supplies such as deodorant, shampoo, body wash,

toothpaste, etc. GRTY is also helping donate gently used or new hats and gloves to keep the new refugees warm in the winter because most of them come from warm weather climate countries where it never snows. Amy will come back with



some of the refugee students for a much broader presentation on November 13 at noon, and all interested congregants are welcome to come and hear the full presentation.

Some upcoming events for the youth group are leading the Rosh Hashanah and Yom Kippur Children's Services and apple picking at Curran's Apple Orchard, and then we will be making our delicious apple pies the following week!

We have a wonderful group of teens this year in our youth group and some really fun activities! We know this is going to be one great year!

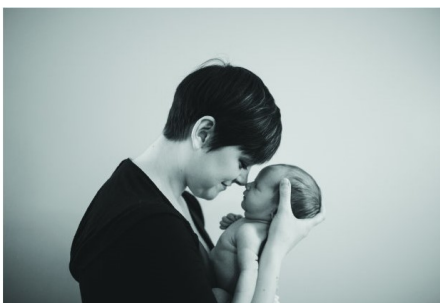
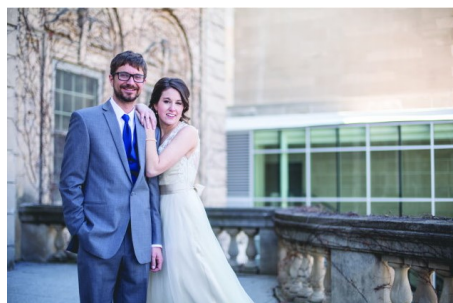


Mindy Joy

PHOTOGRAPHY

PORTRAITURE EVENT COMMERCIAL

Providing photographic coverage in Rockford and the surrounding areas.



Mindy Joy Young
Call me: 815.985.4005

Look up info & Pricing
mindyjoyphotography.com

**Inquire about dates
& reservations**
mindy@mindyjoyphotography.com

Friends of Temple Beth-El

It's a.... Car Mitzvah



Our car mitzvah donation program has earned over \$40,000 in the last 8 years. This comes about through the incredible generosity of our congregants. Jerry Paris has sold his Midas Auto Repair facility on North Main St. after being in business for 38 years. It is now owned by Butitta Bros, and the manager's name is Neil. **The new organization has agreed to continue the car donation program under the same arrangement as before.**

**Our car mitzvah
donation program
has earned over
\$40,000.
in the last 8 years.**

Please contact the new manager at 815-962-7914, and he will insure that Temple is properly rewarded. If you have any questions, please call Jerry at 815-222-6016.
Thank you for your support.

**3012 North Main Street Rockford, IL 61103
815-962-7914**

Huge Selection of Stunning Wedding Invitations



- ✦ Graduations ✦
- ✦ Bar/Bat Mitzvah ✦
- ✦ Mis Quince Años ✦
- ✦ Social Parties ✦
- ✦ Anniversaries ✦
- ✦ Business Cards ✦

5411 East State St. • Rockford, Illinois
815-399-3837 email: rrprint@att.net

1478590

Brian Thomas Photography

Bar/Bat Mitzvah Specials

815 395-1105

brianthomasphotography.com

OFFICE: 1.815.637.0165
CELL: 1.815.222.6076
FAX: 1.815.282.2268
E-FAX: 1.815.231.8414
EMAIL: cparis@GoGambino.com



Connie Paris
BROKER
CRS, GRI, e-PRO
3815 N. Mulford Rd
Rockford, IL 61114

gambino
REALTORS

GoGambino.com

Compliments of Sundberg Funeral Home, Ltd.

Darryl Johnson
Funeral Director
215 North 6th Street
Rockford, Illinois
962-7743



LOCK DOCTOR
SINCE 1974

Transponder
Keys

24 HOUR
EMERGENCY CAR OPENING
& KEY SERVICE
foreign autos our specialty
Lic. # 0191-000247

**COMPLETE
LOCKSMITH
SERVICE**

WE DO JOBS NO OTHER SHOP CAN
AUTO • HOME • COMMERCIAL • SAFE

FAST, COURTEOUS SERVICE
LICENSED, CERTIFIED
& BONDED

874-4030
OR CALL 968-4751

3437 SOUTH BEND RD. • ROCKFORD
MASTER LOCKSMITH



BRING ON THE BOOKS!

For the past eight years, the TBE Book Sale committee has been accepting your used and/or new books for listing online or for the Rummage Sale. To date **we have raised over \$18,000!**

We accept your donations throughout the year. There is a bin in the classroom hallway (to the right of the gift shop) for you to place your donations.

ARTALÉ
WINE CO.

WINE • BEER • LIQUOR
CATERING: WINE PARTIES, DINNERS, PRIVATE IN-HOME TASTINGS
6876 SPRING CREEK RD. SUITE 128, ROCKFORD, IL 61114 815.877.WINE

See our selection of Kosher Wines too!

PET SITTING BY TINA

Tina Sievers
4921 Rolex Parkway
Loves Park, IL 61111

Providing Quality
Pet/House Sitting
since 2004

Phone: 815.742.4537
E-mail: tsievers1956@yahoo.com



Coming Attractions

November 2016

Sat. 5th Art Auction at Anderson Gardens
 Sun. 13th Adult Ed: Jewop A Cappella
 Sat. 19th Joe Gesmer Bar Mitzvah
 Sun. 20th Jewish Federation Kick-off
 Tue. 22nd Partners for Faith Annual Thanksgiving Service

December 2016

January 2017

February 2017

March 2017

April 2017

May 2017

Sat. 27th Madeline Towne Bat Mitzvah

June 2017

July 2017

August 2017

September 2017

October 2017

Sat. 21st Ella Holmstrom Bat Mitzvah

Tentative Date *
 Temple Board

Meets the 2nd Wed. each month
 Library 7:00 PM

We hope this page of Coming Attractions helps you plan ahead for activities at Temple Beth-El. Please understand that some dates and times might be tentative and will be updated each month as dates get closer.

GRTY 2016-2017 Calendar

Sept. 25 Kick Off Meeting: noon-1:45 p.m. Temple lower level
 PIZZA, DESSERT, DRINKS, provided! ALL NEW PARENTS NEED TO BE PRESENT FOR REGISTRATION, SIGN Ups, PAYMENT, ETC. Bring checkbook please.

***Means you can earn service hours**

Advisors: Nanci Soriano H: 654-7677 cell: 222-9626

Lauren Lamont: cell: 988-3727

RSVP to ALL activities quickly please even if you can't attend
Dues: 7-8 graders: \$25 (2nd child \$20)
 9-12 graders: \$40 (2nd child \$25)

HELP WANTED: CARING COMMITTEE

The Caring Committee was formed to provide a meal(s) to a member in the event of a birth, death or illness. Anyone interested in being on the Caring Committee list or is interested in providing a ride to a Temple function, please contact Carol Gordon at 815-398-4214 or cggordon50@hotmail.com.

Membership

Do you know of any unaffiliated Jews looking for a congregation?
 If so, contact Elisa Whitman, membership chairperson at 815-988-2134

PLANT A TREE IN ISRAEL
 Commemorate happy occasions...
 births, engagements, marriages,
 anniversaries, graduations
 or memorialize a loved one.
 "A tree lives on forever in our sacred land"

Call Carol Gordon
 398-4214
 or email requests to:
cggordon50@hotmail.com
 Effective April 1, 2013 the price will be
 \$18.00
 sponsored by
 Sponsored by Jewish Federation
 of Rockford

Torah
 Study Group
 Saturday Morning 10:00 AM

The Tree of Life

Remember a loved one or celebrate a wonderful occasion by noting it forever on the Temple Beth-El Tree Of Life in the foyer. Contact the Temple office for details.

The Temple Bulletin goes away to College....

If you have a student heading off to college, we would like to send him or her a copy of the Temple Bulletin. Let them have one more connection to home while they are away. All we need are name and address, and we will do the rest. Give Joyce a call in the office, and add one more piece of mail from home for your student.

Visit the Temple Beth-El
 New Web Site Address...

<http://templebethel-rockford.org/>.

Check it out!

Have a Date to add?
 Well!
Jayskl@aol.com

The Yiddish Corner

KNAYDL

KNAYdl

A dumpling made from matzoh meal
or a term of endearment

Chicken soup just isn't the same without a few
knaydls thrown into it.

On the Lighter Side...

Gevalt

NASA had sent many, many shuttles into space to orbit the earth and made an attempt to include passengers of all races and creeds...they realized suddenly that they had excluded the clergy...so they invited a priest, a rabbi and a minister to orbit the earth in a shuttle.

Upon their return, crowds of people formed to hear their impressions.

First the priest emerged, beaming and happy, his statement full of joy.

He said, "It was totally amazing. I saw the sun rise and set. I saw the beautiful oceans."

Then the minister came out, also happy and at peace. He said, "I saw the magnificent earth, our home. I saw the majestic sun. I'm truly in awe."

Then the rabbi appeared. He was completely disheveled, his beard tangled flowing in every direction, his kipah was frayed, his tallit was wrinkled, like you can't imagine. They asked him, "Rabbi, did you enjoy the flight?"

He threw his hands up in the air crazily and replied, "ENJOY??? What was to enjoy??"

Oy, oy, oy! Every five minutes the sun was rising and setting! On with the t'fillin, off with t'fillin, mincha, ma'ariv, mincha, ma'ariv!... GEVALT!!!!

Q: If a doctor carried a bag and a painter carried a tool box, what does a mohel carry?

A: A Bris-kit.

Q: What do you call steaks ordered by 10 Jews?

A: Filet minyan.



October 2016 Religious Services

| | | |
|------------|---|--------------------------------|
| October 2 | Erev Rosh Hashanah | 8:00 pm |
| October 3 | Rosh Hashanah Morning Service Tashlich | 10:00 am 2:30 pm |
| October 7 | Shabbat Shuvah Service | 7:30 pm |
| October 11 | Kol Nidre | 8:00 pm |
| October 12 | Yom Kippur Morning Service Yizkor/Neilah Break-the-fast | 10:00 am 3:30 pm 6:30 pm |
| October 14 | Erev Shabbat Service | 7:30 pm |
| October 16 | Sukkot Torah Service | 11:00 am |
| October 21 | Erev Shabbat Service | 7:30 pm |
| October 23 | Simchat Torah Service | 11:00 am |
| October 28 | Kabbalat Shabbat Service | 6:00 pm |

Temple Beth-El Leadership

| | |
|--|-----------------------------------|
| Rabbi | Binah Wing |
| President | Jim Gesmer |
| President Elect | Robert Levy |
| V.P. Communication | Ellen Salley |
| Bulletin Publisher | Jay Sklar |
| Web Maven | Harvey Melamed |
| V.P. Community | Karen Zussman |
| V.P. Finance | Brina Grigg |
| Treasurer | Sharon Goldsand |
| V.P. Ways & Means | Mary Roufa |
| V.P. Education | Lauren Lamont |
| School Principals | Goldie Pekarsky & Adrian Grubb |
| V.P. Religious Functions | Andrea Levey |
| V.P. Building & Grounds | Jordan Towne |
| Jewish Federation Rep. | Ellen Dietz |
| Past President | Jay Sklar |

The Temple Beth-El Bulletin is a monthly publication of Temple Beth-El, Rockford, Illinois. Items for the bulletin should be submitted to the Temple office. Typewritten is acceptable, but text format on a computer disk or e-mailed to the publisher, Jay Sklar jayskl@aol.com, is preferred.