

TEMPLE BETH-EL

1203 Comanche Drive
Rockford, Illinois 61107 815-398-5020



BULLETIN

March 2015 10 Adar - 11 Nisan 5775

Mission Statement: Temple Beth-El is a congregation of Jews and their families building a community committed to participation in all aspects of Jewish life. By community, we mean a group of diverse people who share a strong connection fostered by Temple Beth-El. By participation, we mean that all members will partake in and support the spiritual, cultural, educational and social life of Temple Beth-El.

It's Goodbye, For Now

Congregants and friends stopped by on Saturday, February 14th to say good-bye to long time Rockfordian and Temple Member, Tony Toback. After a series of falls and health issues, the decision was made that Tony might be better near his daughter in New York. However, while the Yankees are in New York, many of his siblings are in New York and some of Tony's favorite grandchildren, he has decided to keep his condo and plans to return this summer to Rockford to take part in his 17th



summer as a volunteer at Anderson Japanese Garden. So for now, maybe we

Continue please on page 4

Chaverim,

Spring time may seem quite a long way off when you are looking at single digit temperatures and watching a few inches of snow fall to the ground. However, the Jewish calendar is quickly moving towards the celebration of spring and the renewal of creation and growth that it represents. Purim is fast

approaching (our celebration is Wednesday, March 4th at 6pm!) and Passover is just around the corner. In fact, Passover is so early in April (1st Seder is Friday, April 3rd) that I want to mention it now.

Pesah, (Passover) is the main spring-time festival that in ancient times required a pilgrimage to Jerusalem. The people gathered at the Temple and made offerings of their animals and new produce of the fields. When the Temple was destroyed, the Rabbis had to make many changes to adapt to the new circumstances of life without a central place of offering.

While some community activities were relocated to the synagogue, other practices such as Shabbat meals and the Pesah Seder were transferred to another place of holiness: the Jewish home. It is interesting to note that, for the Rabbis, the Jewish home was considered the main replacement for the destroyed Temple, not the synagogue. This may seem strange to us now because the synagogue seems to be the main location for expressing our Jewishness.



From Rabbi Binah Wing

1st Seder falls on a Friday night so we will not be having Shabbat services here at Temple.

INSIDE THIS ISSUE:

President's Message	3
Service Schedule	16
From the Board of Directors	2
Religious School News	4
Friends of Temple Beth-El	13, 14
Birthdays & Anniversaries	5
Yahrzeits and Contributions	6
Calendar	17

The Rabbis envisioned the Jewish family as the foundation of Jewish life, and no holiday more than Pesah enshrines this value. The extended family including loved ones and friends gather together in the home to reenact the most important event that happened to the Jewish people: the Exodus from Egypt and the beginning of our life in covenant with God.

"Congregational" seders are relatively new to the Jewish scene. They originated because some Jews, after celebrating with their own families in their homes, wanted to also celebrate with their temple family. Over time, these 2nd night seders grew in popularity. I once attended one that was held in a hotel with over 500 people! In any case, these 2nd night seders were never intended to replace the celebration that belongs in the home. These days not everyone has a seder in their home. Some people only go to the congregational seder on the second night of Passover. This is a nice tradition that allows us celebrate the holiday as a community. However, our tradition challenges us to make sure that everyone is able to celebrate Passover at home - either in their own, or the home of a family member or friend.

This is especially true this year because **1st Seder falls on a Friday night so we will not be having Shabbat services here at Temple.** Instead, I want everyone who wishes to, to have the opportunity to celebrate 1st Seder in someone's home. As a Temple, we are going to attempt to match up people who need a place to go with open spaces at tables. Are you hosting a seder this year? Could you find room at your table for 2-4 extra people (or more)? If so, please contact me at binahw@earthlink.net or call the Temple. Don't be shy if you have young children or don't follow the haggadah letter for letter - I'm sure many people wouldn't mind that at all! Likewise, if you find that you are looking for a place to go for the first night of Pesah, please contact me. In this way, Pesah can be celebrated by all who wish in a way that respects tradition and the central role of the home in our Jewish lives. I look forward to hearing from you and celebrating with you on the 2nd night of Passover, Saturday April 4th.

Shalom,
Rabbi Wing

From the Temple Board.... By Secretary Ellen Salley



The Temple board met on February 11th, 2015. Jay Sklar discussed the Rabbi's contract and the board voted unanimously to approve the contract. The contract is now waiting for the Rabbi's approval and signature.

Brina then called the meeting to order. The annual Temple meeting is set for June 7th at 10:30 with breakfast at 10:00. Brina has met with the safety committee and discussed some of the recommendations being considered. She will attend another meeting in March. Brina will also be attending the Scheidt Seminar in April.

The board decided to conduct an audit of the Temple and this should occur sometime this year.

The Temple Passover Seder will be held on Saturday April 4th. The cost will be the same as last year. \$20 for adults, \$10 for children and no more than \$50 for a family.

The board has discussed some of the concerns of the Temple regarding the seating, safety issues and Yahrzeit Board and is looking into possibly hiring an architect to help us plan for these concerns.

The fifth and sixth graders attended the OSRUI retreat in February and had a great time. They also participated in a Family Shabbat service this past January. Thanks to the members who have donated to the Garten Fund all camperships applied for have been granted.

GRTY had a great time at their game night and lock in. Very little sleep was had by all. They also made Hamantaschen with Ronit and will lead a Shabbat service on March 13th.

School supplies were dropped off at Spring Creek School and the principal was very grateful. The social action committee is looking into hosting a blood drive after Food-A-Rama. Everyone who attended the Chocolate night at the Zussman house enjoyed a nice Havdalah service, lots of good chocolate desserts and great conversation.

Jay Sklar, our Temple facilitator, is working on setting up a calendar on Google that will show all meetings and events for both the Temple and the Federation. He is also working on updating e-mails for the Temple members.

The lox box fundraiser was a success thanks to all the volunteers who helped organize and work the fundraiser. There are a number of activities coming up in March.

March 14th: Heartbeats free concert, 7:00 at the Maddox Theatre at Rockford University

March 15th: Film - The Yankles, 3:00 at the Illinois School of Medicine

March 22nd: Good Deeds Day

March 22nd: Film - Hava Nagila, 3:00 at the Illinois School of Medicine

March 29th: (Note date change) Film - Two Who Dared, 3:00 at the Unitarian Church

Please continue to bring in more rummage for the sale which will be March 26, 27, and 29. Members are needed to help set up, work, and take down the rummage sale.

Brina's Bits

For the first time in the history of one of our biggest fundraisers, the dates and formats have changed.

The Seriously Huge

Rummage Sale is coming! Yes, the Seriously Huge Rummage Sale is coming! No, you didn't miss it at its old time on the calendar. When is it you ask?

Setup is Sunday March 15th from 9:00 a.m. until 1:00

p.m. and the sale is March 26th, March 27th, and March 29th. Milly Kaplan and Susan Rosenfeld are asking you to bring in more of your rummage. You may have brought rummage in back in the summer or fall. With spring just around the corner (we hope), it is the perfect time to go through your kitchen cabinets. You haven't used that set of dishes is years.

Setup is Sunday March 15th from 9:00 a.m. until 1:00 p.m. and the sale is March 26th, March 27th, and March 29th.

Going through your closets or dresser drawers is like a trip down memory lane. Remember who you were with when you wore that lovely sweater. You wore that suit to Rosh Hashanah services 5 years ago. Maybe it's time to put those items in a bag and bring them to the Temple's Seriously Huge Rummage Sale. Yes, it's a lot of work getting all that stuff out of the drawers and closets, but there is an upside of course. Now your closet or dresser has room for new clothes.

It is true what they say: many hands make small work out of a big project.

In all seriousness, after you have dropped off your clothes, give Faye Marcus a call to see when you can help or email Faye Marcus to sign up. Faye can be reached at fe.marcus@att.net or 815-877-4285.

It is true what they say: many hands make small work out of a big project.

Thank you in advance for lending us yours.

See you soon,
Brina Grigg

"Seriously Huge Rummage Sale"



Rummage Sale

Help is needed! Come and pitch in. It's fun. Please call or email Faye Marcus to sign up. fe.marcus@att.net/815-877-4285

Important Dates:

FIRST SET UP DAY: SUN, MARCH 15,
9a.m.-1 p.m.

The more hands we have, the less time we need. Extra Set-up days: 10 a.m.-2 p.m.

Choose your times.

March 16-20

March 23-25

SERIOUSLY HUGE RUMMAGE SALE

open for business:

Thursday, March 26: 8 a.m.-6 p.m.

Friday, March 27: 8 a.m.-4 p.m.

Sunday, March 29: 10 a.m.-1 p.m.

PACK IT UP:

SUNDAY, MARCH 29: 1-4 P.M.

The more hands we have, the less time we need.

Letters to the Editor...

Thank you to everyone at TBE who donated school supplies for students at one of our neighborhood schools -Spring Creek Elementary. Karen Zussman and I delivered your donations. Children lose and use up crayons, pencils, etc. These supplies will fill in for the remainder of the school year. You have performed a mitzvah!



Faye Marcus

SCHOOL DAZE

200 Words or Less...

By Goldie & Adrian



February flew by despite the extreme weather at times. We cancelled school February 1 due to a big snowstorm and we froze coming to school on February 15. In spite of this, the students had a great time making mandel brot with Ronit, creating beautiful, artistic trees for TuB'shevat with Sandy and learning songs with Barbara and Mitch. Some of our fifth and sixth grade students spent the February 6-8 weekend at an OSRUI retreat with kids from other small city congregations.

We have three exciting events coming up in March. We will celebrate Purim on Wednesday, March 4 at 6:00 with a fun service. Then on Sunday, March 8 beginning at 10:00, we will watch a hilarious Purim movie and have a Purim carnival followed by a hot dog lunch. The third event will be Good Deeds Day on March 22. Families will be invited to prepare goody baskets to brighten the day of women that are housed in Remedies, a women's shelter. We will wear our free, Good Deeds Day t-shirts and have special treats as we do our mitzvahs. If you want to donate items for the goody baskets, see the list else ware in this bulletin. Good Deeds Day is sponsored by the Jewish Federation and Temple Beth-El Religious School. We hope all families will participate in these fun and worthwhile activities. Members of the Jewish community who are not members of Temple Beth-El are also invited to participate in these three events.



Madeline Towne, Josh Zussman and Joe Gesmer attended the 5th and 6th grade OSRUI Retreat February 6th-8th.

The Jewish Federation of Greater Rockford
and
Temple Beth-El Religious School present:

Purim Carnival 2015

Sunday, March 8

10:00-noon at Temple Beth-El



10:00 hilarious Purim movie

11:00-11:40 Carnival / 11:40 hot dog lunch

Games, Prizes, Hot Dog Lunch

Everyone is welcome to this free event!

Continued from Page 1

call this Tony's "extended stay" in New York. And



while he is there, I am sure he would love to hear from his friends here in Rockford. This is where you can reach him.

Tony Toback
2001 Ocean Blvd
Atlantic Beach, NY 11509
516-239-1400

Cards, letters or phone calls are appreciated.

Speedy recuperation and hopefully we will all see you in the summer.

March Oneg Committee

March 6

Victoria and Greg Rozman
Jon Rozman

March 13

Becky and John Thompson
Amy and Jordan Towne

March 20

Nanci and Marc Soriano
Jackie and Leonard Bernstein

March 27

No Oneg

The Temple
Beth-El
Family greatly
appreciates and
thanks our Oneg
Hosts for helping to
make our Services
more meaningful
and offering an op-
portunity for us all
to mingle and
socialize.



KUGEL MAKERS NEEDED FOR FOOD-A-RAMA



Kugels are a very popular and profitable item at our Food-A-Rama fundraiser. Nanci Soriano has graciously agreed to head up a group to make kugels for this year's event. However, Nanci can't do it alone. Nanci has all the instructions and will advise how you can help prepare and then work as a team to put the kugels together in the Temple kitchen. Please call Nanci today at 815-654-7677 or e-mail her at Soriano.5@comcast.net to let her know she can count on you. Food-A-Rama is our biggest fundraiser each year and requires the efforts of everyone.

March Birthdays & Anniversaries

Adults

Scott Schoeller 3/1
Jordan Nevler 3/1
Norma Polcek 3/1
Judy Goldman 3/2
Fred Glassman 3/5
Jerry Paris 3/8
Garrett Einhorn 3/9
Joan Davis 3/9
Gary Rubin 3/12
Allison Holmstrom 3/12
Mark Lamont 3/15
Susan Glassman 3/15
Mary Shore 3/17
Jacob Kopnick 3/17
Goldie Pekarsky 3/18
Chelsi Schoeller 3/20
Harvey Einhorn 3/20
Greg Sparks 3/22
Barb Berney 3/24
Jackie Bernstein 3/27

Fred Dietz 3/28
Alex Rozman 3/29
Joyce Ruthe 3/30
Jason Simon 3/31
Mitchell Kopnick 3/31

Children

Anniversaries

Jeffrey & Paula Lash 3/16/91
Ginny & Sheldon Weiss 3/23/75
Laura & Tim Sage 3/26/88



The Temple Beth-El Gift Shop



GIFT SHOP HOURS

Monday—Friday, call the office

Sunday 10am - noon*

*Open Sundays when school is in session.
And 1/2 hour before 7:30 p.m. services

If you need to visit the shop at another time, please call the Temple office (398-5020), Milly Kaplan (877-5717) or Susan Rosenfeld (964-8642).

YAHRZEIT LIST

If you are interested in having your loved one's name on the Yahrzeit list, please call Joyce in the Temple Office, 398-5020

Read March 6

Denise Polcek
Leah Schaider
Edward Levitz
Bruce Polcek
May Kobrin
Beverly Fierstien
Dr. Joseph Roufa
Jessie Futerman
Clara Stone

Read March 13

Dr. Sherwin Gersten
Bernard Berney
Edith Karsner
Lena Zenoff
Harry Shanhouse
ML Bork
Saul Helfand
Earl Glenner
Samuel Gersten
Martin Price

Read March 20

Jerome Woodruff
Saul K. Bork
Carrie Klein
Stephen Craig Osran
Douglas Pavey
Asher Oscar Finkel
Louis Landy
Fred Paris
Ida Kimmelman
Evelyn Kaplan
Regina Klinsky
Henry Levy
Arnold Deutsch
Slava Bolotina
Martin Marx
Zelda Sanders
Vivian Tobias

Read March 27

George Evans
Herman Marcus
Herman Shore
Patricia Bork
Murray Solomon

YAHRZEITs cont.

Laura Hoffman
Irene Seidler
Max Becker
Martha Rosenbloom
Harry Rosenzweig
Solomon Rosenfeld



MEMORIAL BOARD

Honor the memory of your loved ones by placing their names on the board in our memorial alcove. Please supply the Temple office with the name, date of birth and date of death. The minimum donation is \$200. The light alongside each name is lit every year to mark the anniversary of the death, and the name appears in the annual memorial book.



CONTRIBUTIONS TO OUR FUNDS

Benjamin Schaider Building Fund

Speedy recovery to Sherry Brownstein
-Rose Gulatto

In memory of Leonard Friedlander
In memory of Donald Busch
-Gerry Schaider

Congratulations to Lisa and Larry Pearlman on their marriage
Speedy recovery to Mark Lamont
Good luck to Tony Toback on his move
In memory of Don Busch
-Nanci and Marc Soriano

Cy Sachs Fund

In memory of Donald Busch
Speedy recovery to Sherry Brownstein
Best wishes to Tony Toback
-Judy Goldman

Garten Fund

In memory of Don Busch
-Milly Kaplan

Hannah and Herbert Saal Fund

In memory of Donald Busch
-Chere and Thomas Anderson

Unrestricted Donation

In memory of Don Busch
-Eve Ferkel Family

Rabbi's Discretionary Fund

In memory of Caroline Vinokur
-Merle Langs and Andrea and Brian Bear

In memory of Martin Price
-Zussman Family

CONDOLENCES TO:

Enid Busch and family
on the passing of
Donald Busch

Thank You.....

The Temple has been the recipient of donations from the Temple Family in the name of many funds in order to supply much needed money for worthwhile programs and projects. We would like to spotlight a couple of these funds.

The Robert and Joel Garten Youth and Scholarship Fund is to provide camper-ships for religious school students. This fund is administered by the Education Committee and the Rabbi.

Opportunity to remember or honor someone special

If you would like to remember or honor someone special, please consider making a donation of \$65 to the J Woodruff Memorial Book Fund for the purchase of a Torah Commentary. The book purchased will contain a bookplate in the front of the volume commemorating your loved one for everyone who uses that volume to see. Send in your check or call the Temple office today.

Speedy recovery ...

To Sherry Brownstein



TEMPLE **BETH-EL** **MINUTE WITH** **A MEMBER**

Dear TBE Friends:
The bulletin this month
will feature our first "Minute with a Member".

Please take a few moments to learn a bit more about Mitch and Lisa Kopnick and Family. Below are answers to a few questions. We hope you will enjoy getting to know them a bit more!

-Tell a little about yourself and family: We're Mitch, Lisa, Max age 22, Jacob age 16, Benjamin age 14 and Millie our dog. Ageless!

-What do you do for fun? (Hobbies, special interests, etc.): We enjoy getting together with family, travel, good food!

-Something people would be surprised to learn about you/us: We enjoy cooking, have taken cooking classes and help with restaurant reviews for the Janesville Gazette, our local paper.

-Your favorite Temple activities: Bar/Bat Mitzvahs, Food-A-Rama, Musical guests!

-A memorable moment at TBE: Being on stage with Danny Friedlander and Jeff Klepper.

-Favorite Judaic holiday or food: Passover. We make 20 lbs of Gefilte Fish from scratch that we bring to Seder at Mitch's brother's in Cincinnati.

-Where's your favorite place to go in the area? We love Holi Cannoli in Elkhorn for Italian

and India House in Rockford for Indian food.

-If you could take two weeks off from all your responsibilities, where would you go and what would you do?

1 week in Israel and 1 week in a Villa in Tuscany.

-What is the best advice you have ever received?

Surround yourself around people that elevate you!

-If you won the lottery, what is the first thing you would do? Pay off the student loans,


the house, the ex, the government, set aside a little for college, a little for Temple and with the rest... dinner for the whole family at Taco Bell!

-What was the last movie, TV show or book that you couldn't stop watching or put down? Lisa had surgery and spent the down time watching 5 seasons of Breaking Bad in 3 days!

-What was your first job? Mitch: Paper route, 7th grade. Lisa: bagging egg rolls and cookies at a Chinese Restaurant. 9th grade.

-What was your favorite job? Mitch: photographer for the school paper at Michigan State. Lisa: ICU nurse, MacNeal Hospital, Berwyn Illinois.



Memorial and Tribute Donation Form																	
 <p>From:</p> <p>Name: _____</p> <p>Address: _____</p> <p>City: _____ State _____ Zip: _____</p>	<p>To: Send the acknowledging card : <input type="checkbox"/> Same as from, or: Name: _____</p> <p>Address: _____</p> <p>City: _____ State _____ Zip: _____</p>																
<p>For: (check one and fill in names as appropriate)</p> <p><input type="checkbox"/> In Memory of: _____</p> <p><input type="checkbox"/> Speedy Recovery to: _____</p> <p><input type="checkbox"/> Congratulations to: _____</p> <p><input type="checkbox"/> In Honor of: _____</p> <p><input type="checkbox"/> Other: _____</p>	<table border="1"> <thead> <tr> <th>Donation:</th> <th>Fund:</th> </tr> </thead> <tbody> <tr> <td><input type="checkbox"/> Triple chai (\$54)</td> <td><input type="checkbox"/> Garten <input type="checkbox"/> Powell <input type="checkbox"/></td> </tr> <tr> <td><input type="checkbox"/> Double chai (\$36)</td> <td><input type="checkbox"/> Lazarus <input type="checkbox"/> Dermer <input type="checkbox"/> Building <input type="checkbox"/></td> </tr> <tr> <td><input type="checkbox"/> Chai (\$18) <input type="checkbox"/> \$10</td> <td><input type="checkbox"/> Woodruff <input type="checkbox"/> Rabbi's Discretionary</td> </tr> <tr> <td><input type="checkbox"/> \$4 (Min.)</td> <td><input type="checkbox"/> Pap <input type="checkbox"/> Kupperman <input type="checkbox"/></td> </tr> <tr> <td><input type="checkbox"/> Other: _____</td> <td><input type="checkbox"/> Landscaping <input type="checkbox"/> Gifts&Flowers</td> </tr> <tr> <td></td> <td><input type="checkbox"/> Sachs <input type="checkbox"/> Liebovich Fund</td> </tr> <tr> <td></td> <td><input type="checkbox"/> Other: _____</td> </tr> </tbody> </table>	Donation:	Fund:	<input type="checkbox"/> Triple chai (\$54)	<input type="checkbox"/> Garten <input type="checkbox"/> Powell <input type="checkbox"/>	<input type="checkbox"/> Double chai (\$36)	<input type="checkbox"/> Lazarus <input type="checkbox"/> Dermer <input type="checkbox"/> Building <input type="checkbox"/>	<input type="checkbox"/> Chai (\$18) <input type="checkbox"/> \$10	<input type="checkbox"/> Woodruff <input type="checkbox"/> Rabbi's Discretionary	<input type="checkbox"/> \$4 (Min.)	<input type="checkbox"/> Pap <input type="checkbox"/> Kupperman <input type="checkbox"/>	<input type="checkbox"/> Other: _____	<input type="checkbox"/> Landscaping <input type="checkbox"/> Gifts&Flowers		<input type="checkbox"/> Sachs <input type="checkbox"/> Liebovich Fund		<input type="checkbox"/> Other: _____
Donation:	Fund:																
<input type="checkbox"/> Triple chai (\$54)	<input type="checkbox"/> Garten <input type="checkbox"/> Powell <input type="checkbox"/>																
<input type="checkbox"/> Double chai (\$36)	<input type="checkbox"/> Lazarus <input type="checkbox"/> Dermer <input type="checkbox"/> Building <input type="checkbox"/>																
<input type="checkbox"/> Chai (\$18) <input type="checkbox"/> \$10	<input type="checkbox"/> Woodruff <input type="checkbox"/> Rabbi's Discretionary																
<input type="checkbox"/> \$4 (Min.)	<input type="checkbox"/> Pap <input type="checkbox"/> Kupperman <input type="checkbox"/>																
<input type="checkbox"/> Other: _____	<input type="checkbox"/> Landscaping <input type="checkbox"/> Gifts&Flowers																
	<input type="checkbox"/> Sachs <input type="checkbox"/> Liebovich Fund																
	<input type="checkbox"/> Other: _____																

GRTY NEWS

Submitted by: Co-President Emily Shore

On January 25th, GRTY teens showed off their skills at Carlson Ice Arena. After two hours of ice-skating, falling, and lots of laughs, we finished the afternoon off with hot chocolate!

Since Purim is coming up, GRTY made hamantaschen at Temple on February 8th. After a fun morning of rolling and cutting dough, GRTY ended up with many chocolate chip, poppy seed, apricot, cream cheese chocolate chip and cherry filled cookies. We even created some rainbow-colored hamantaschen- a first for GRTY! A big thanks to our parent helpers and dough makers including Mitch and Lisa Kopnick, Mary Shore, Karen Zussman, Rob Levy and Patty Kaufman. Also, thank you to Ronit Golan for helping us throughout this process!

If you would like to buy a plate of hamantaschen, we will be selling them at the Purim carnival on March 8th. A plate of 6 cookies is 5 dollars.

Throughout February, GRTY has been meeting in order to write and plan our own creative Shabbat service. Mark your calendars for March 13th to hear about our theme and service project and hear prayers, readings and songs led by GRTY.

Upcoming events include a service planning session on March 1st, the Purim Carnival and final service run-through on March 8th and the Shabbat service on March 13th.

For our service project this year, GRTY has chosen Healing Pathways, a cancer resource center. GRTY will be holding a drive for items on their wish list including items such as paper towels, garbage bags, art supplies, water bottles and gift cards to Woodmans. Any wish list items and/or monetary donations can be left in the marked box located in the Temple library until March 20th. Thank you!



WISH LIST

MISCELLANEOUS:

Cash donations welcomed to purchase items on Wish List
 2-Diffusers-can be found in Vitamin Stores
 Essential Oils for Diffusers-Frankincense, Myrrh, Lavendar
 Gift cards: Office Max / Office Depot, Woodman's, Walmart, Home Depot and Itunes gift cards
 Postage stamps
 3-long extension cords

HOUSEKEEPING / KITCHEN:

Bottles of water – 8 oz. size
 Paper cups for hot beverages (not Styrofoam)
 Paper towels
 Tall kitchen bags – drawstring, 13 gal. size (black)
 Toilet paper

WISH LIST – HOPE FLOATS! YOUTH PROGRAM

Cash donations welcomed also to purchase items on Wish List
 Small LED flashlights/batteries (need up to 20 usually big box stores & dollar stores carry)
 Cash for iTunes gift cards
 Cash to purchase "Talking with My Treehouse Friends about Cancer" book (\$10 each)
 Canvas
 Paint brushes
 Aprons for youth sizes (for painting)
 Small acrylic cutting boards
 Journals for youth (from Target – 3 x 5 composition book found usually right at front entrance)
 Journals for cancer patient
 Recordable books (Hallmark)
 Karaoke CDs for kids (ages 8-15)
 DVDs for youth (ages 8-15)
 Office Max Gift Cards
 BPH free water bottles (kids size)
 Gift cards for Woodman's for supplies and snacks
 Flameless votive candles (batteries if needed)



PASSOVER SEDER

Saturday, April 4, At 5:30 PM

Come celebrate with the Temple family!

Adults - \$20.00, Children 3-12 \$10.00, Children under 3 free or \$50 per family

Chicken, matzo ball soup, potato and vegetable will be served.

Each family is asked to bring a Kosher for Passover dessert.

A portion of the money will go to MAZON to help feed the hungry. Your check is your reservation.

Deadline for reservations is Monday, March 30th, 2015.

Please send coupon with check to:

Temple Beth-El, 1203 Comanche Dr., Rockford, IL 61107 Or call the office to place your reservation on your Visa or MasterCard.



Name _____ Phone _____

Please reserve _____ seats for the Temple Seder. # of adults _____ # of children over 3 _____

Enclosed is a check for \$ _____ Dinner includes **gefilte fish or fruit** for each person.

Please indicate how many fish _____ fruit _____

We are contributing an additional \$ _____ to defray the cost for those who could not otherwise attend.

We cannot attend, but please accept a gift of \$ _____ to help defray the Seder costs.



Heartbeat, the Israeli-Palestinian youth music community, bring their powerful sound and messages to Rockford University's Maddox Theatre in an effort to end violence and promote equality.

FREE CONCERT
Hosted and Sponsored by
Rockford University

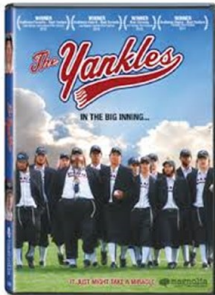
Special Performances by Keith School, Rockford
Lutheran School, The Lone
Canary, and The Last Wordbender

Co-Sponsored by: Rock River Valley Peace Coalition, Jewish Federation of Greater Rockford, Muslim Association of Greater Rockford, YMCA of Rock River Valley, Rockford Lutheran, Our Savior's Lutheran Church, Turkish American Society of Rockford, Rydell Family Foundation, United at Peace, Rockford Area Arts Council, Jim & Pam Keeling, Sunil Puri, Doug & Mary Perks, John & Barbara Holmstrom, Lois Lutz, Karen Bieschke, Wray & Sue Howard, Gary Schlehuber & Nancy Harvey, Mike Schablaske.

Rockford Diversity Film Festival

Three Sundays in March 2015 / Showings at 3:00 pm / \$5 Per Film

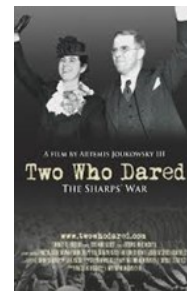
Note Change of Dates / More Information Will Follow Soon



March 15
College
of Medi-
cine



March 22
College of
Medicine



March 29
Unitarian
Church

Good Deeds Day

Come out on Sunday, March 22, and join in a worldwide celebration of good by supporting the Jewish Federation of Rockford and Temple Beth-El Religious School Good Deeds Day! About 700,000 volunteers from about 50 countries participate in Good Deeds Day. Arrive at 10:00 and stay until the job is done. Free t-shirts for participants while supplies last.

Our project will be making Personal Care Bags for people at

Remedies. Remedies is a health and human services agency that helps adults and their children deal with problems arising from substance abuse or domestic violence. We are now collecting personal care items to be bagged on Good Deeds Day. We are in need of small bottles of shampoo, conditioner, lotion, packaged snacks, etc. Larger items from the wish list can also be donated at this time. Items can be dropped off at Temple Beth-El, 1203 Comanche Dr.

WISH LIST

Blankets (Twin Size)
Sheets (Twin Size)
Pillows
Bath Towels
Wash Cloths
*New Children's Underwear
*New Women's Underwear/Bras (All Sizes)
*New Socks (All Sizes)
*New Sleepwear for Women, Children and Infants
Umbrellas
Daily Planners/Calendars
Journals
Toothpaste Toothbrushes
Feminine Hygiene Products
Hair Brushes and Combs
African-American Hair Care Items
Diapers (All Sizes)

Baby Wipes
Baby Wash, Lotion, Powder
Electrolyte Replacement Drink
Baby Blankets
New/Like New Children's Toys
New/Like New High Chairs, Cribs, Car Seats, Strollers
Coloring Books
School Supplies
Backpacks
Gas Cards
RMTD Bus Tokens
Gift Cards to Discount Stores
Over the Counter Pain Reliever
Cold/Cough Medicine for Adults and Children
Antibacterial Ointment, Bandages Antiperspirant
Hair Sprays and Gel

At Temple Beth-El



Spring is just around the corner and what is the first thing that Temple members think of ----- Food-A-Rama of course, and **what would FAR be without blintzes?**

I can't imagine. Everyone loves our blintzes and they are a BIG moneymaker for FAR. If we are to have enough blintzes to meet the demands of our customers, we need your help. We will be doing 4 cooking sessions between Sunday, April 12th and Sunday April 19th. Plan ahead and mark your calendar to join us for one or more

Below are the dates and times:

Sunday, April 12th, 9 am - noon – led by Ronit Golan (pitagolan@yahoo.com – 815-394-1013)

Monday, April 13th, 9 am – noon – led by Sharon Goldsand (sgoldsand@comcast.net – 815-335-4050)

Tuesday, April 14th, 9 am – noon - led by Barbara Simon (bjsimon61114@yahoo.com – 815-637-6430)

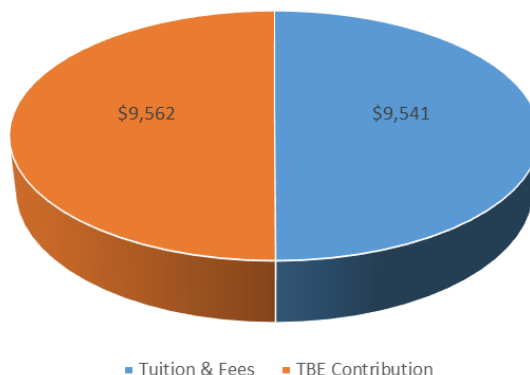
Sunday, April 19th, 9 am – noon – led by Ronit Golan (pitagolan@yahoo.com – 815-394-1013)

Contact the above leaders to volunteer today. We need YOU!!!!

Thank you,
FAR Committee

Following Your Religious School Money...

Religious School Income 2013-2014



Did you know that Temple Beth-El subsidizes our religious school? With our current enrollment, the subsidy to our religious school is approximately 50%.

Members of Temple Beth-El recognize the importance of religious education to the future of our Temple and the Jewish community in Rockford. The parents of our religious school students should be aware of the contribution of the temple community to the education of their children and support the congregation to the best of their ability both financially and through volunteerism.



QUESTION? What do you get when you mix a little Havdalah, a healthy dose of chocolate and a moderate (or not) amount of wine?

Answer: You get a lot of happy smiling adults. Thank you to the Zussmans for opening their home to our social event "An Evening of Chocolate, Wine & Conversation" on January 31st.

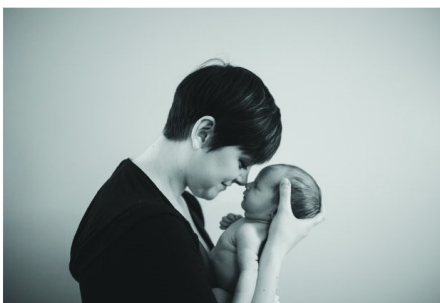
2015 FAR Committee Chairs

Co-Chairperson/Ticket Printing/Set-Up/Signage/Pre-Order Set-Up/Cookies - selecting, purchasing and packaging/Transition	Jay Sklar	815/218-9106
Co-Chairperson /Kitchen/Beans/Transition	Ronit Golan	815/394-1013
Personnel	Faye Marcus	815/877-4285
Deli, Bakery, Chip Ordering/updating letters, articles, forms, etc./creating labels/ preparing reports/taking in and depositing cash	Sharon Goldsand	815/335-4050
Sponsorships - getting sponsors	Sara Deutsch	815/636-9607
	Karen Zussman	815/282-9058
Boxes	Mark Smith	
Publicity	Susan Rosenfeld	815/964-8642
Decorations	Mary Shore	815/282-5259
Ticket Mailing	Goldie Pekarsky	815/397-7978
Arrangements	Amy Towne	845/876-9421
Purchase Food Supplies and Paper Goods	Ellen Salley	815/885-1042
Health Department	Sara Deutsch	815/636-9607
Floor Supervisor	Sara Deutsch	815/636-9607
Deli-Meat	Barbara Simon	815/637-6430
Deli-Salads	Sandy Simon	815/397-3462
Check-out	Milly Kaplan	815/877-5717
Sampling/Pre-order Loading	Lynda Vanderweit	815/332-2198
Parking/Police	Jack Simon	815/637-6430
	Jerry Grubb	815/885-8554
Blintzes	Victoria Rozman	815/633-0338
Faxes	Elisa Whitman	815/636-1007
Stuffing bags/buffet/Kugel	Nanci Soriano	815/222-9626
Bakery	Adrian Grubb	815/885-8554
	Goldie Pekarsky	815/397-7978
Hostesses	Barbara Holmstrom	815/399-7166
Herring/chopped liver	Ellen Dietz	815/877-2348
Deliveries	Connie Paris	815/885-8545
Pickle Packing	Jerry Paris	815/222-6016
Carry Out	Karen Zussman	815/282-9058
Drive through	Allison Sage	815/978-1067
	Rachel Bagne	716/510-5973
Photography	Harvey Melamed	815/398-1834
Extended Hours/Clean up	Jill Shachter	815/978-8035

Mindy Joy PHOTOGRAPHY

PORTRAITURE EVENT COMMERCIAL

Providing photographic
coverage in Rockford and the
surrounding areas.



Mindy Joy Young
Call me: 815.985.4005

Look up info & Pricing
mindyjoyphotography.com

**Inquire about dates
& reservations**
mindy@mindyjoyphotography.com

Friends of Temple Beth-El

It's a.... Car Mitzvah



**Our car mitzvah
donation program
has earned over
\$40,000.
in the last 8 years.**

Our car mitzvah donation program has earned over \$40000 in the last 8 years. This comes about through the incredible generosity of our congregants. Jerry Paris has sold his Midas Auto Repair facility on North Main St. after being in business for 38 years. It is now owned by Butitta Bros and the manager's name is Neil. **The new organization has agreed to continue the car donation program under the same arrangement as before.**

Please contact the new manager at 815-962-7914 and he will insure that Temple is properly rewarded. If you have any questions, please call Jerry at 815-222-6016.

Thank you for your support.

3012 North Main Street Rockford, IL 61103

815-962-7914

Huge Selection of Stunning Wedding Invitations



**Rock
River Printers**

- ✦ Graduations ✦
- ✦ Bar/Bat Mitzvah ✦
- ✦ Mis Quince Años ✦
- ✦ Social Parties ✦
- ✦ Anniversaries ✦
- ✦ Business Cards ✦

5411 East State St. • Rockford, Illinois
815-399-3837 email: rrprint@att.net

1478590

Brian Thomas *Photography*

Bar/Bat Mitzvah Specials

815 395-1105

brianthomasphotography.com

OFFICE: 1.815.637.0165
CELL: 1.815.222.6076
FAX: 1.815.222.6076
TOLL FREE: 1.888.242.6246
EMAIL: cparis@GoGambino.com



Connie Paris
CRS, GRI
3815 N. Mulford Rd
Rockford, IL 61114

gambino
REALTORS

GoGambino.com

Compliments of Sundberg Funeral Home, Ltd.

Darryl Johnson
Funeral Director
215 North 6th Street
Rockford, Illinois
962-7743



**LOCK
DOCTOR**

SINCE 1974

**Transponder
Keys**

**24 HOUR
EMERGENCY CAR OPENING
& KEY SERVICE**
foreign autos our specialty
Lic. # 0191-000247

**COMPLETE
LOCKSMITH
SERVICE**

WE DO JOBS NO OTHER SHOP CAN
AUTO • HOME • COMMERCIAL • SAFE

FAST, COURTEOUS SERVICE
LICENSED, CERTIFIED
& BONDED

874-4030
OR CALL 968-4751

3437 SOUTH BEND RD. • ROCKFORD
MASTER LOCKSMITH



BRING ON THE BOOKS!

For the past eight years, the TBE Book Sale committee has been accepting your used and/or new books for listing online or for the Rummage Sale. To date **we have raised over \$18,000!**

We accept your donations throughout the year. There is a bin in the classroom hallway (to the right of the gift shop) for you to place your donations.

ARTALÉ
WINE CO.

WINE • BEER • LIQUOR
CATERING: WINE PARTIES, DINNERS, PRIVATE IN-HOME TASTINGS
6876 SPRING CREEK RD. SUITE 128, ROCKFORD, IL 61114 815.877.WINE

See our selection of Kosher Wines too!

PET SITTING BY TINA

Tina Sievers
4921 Rolex Parkway
Loves Park, IL 61111

*Providing Quality
Pet/House Sitting
since 2004*

Phone: 815.742.4537
E-mail: tsievers1956@yahoo.com



Coming Attractions

April 2015

Sat.. 4th Passover Seder

Sun. 12th Holocaust Remembrance Day

Sat. 18th Madeleine Libman Bat Mitzvah

May 2015

Sun. 3rd Israel Day

Wed. 20th Food-A-Rama

June 2015

Sun. 7th TBE Annual Meeting

July 2015

August 2015

September 2015

October 2015

November 2015

Sat. 21st Aron Tatman Bar Mitzvah

December 2015

January 2016

February 2016

March 2016

Tentative Date *
Temple Board

Meets the 2nd Wed. each month
Library 7:00 PM

We hope this page of Coming Attractions helps you plan ahead for activities at Temple Beth-El. Please understand that some dates and times might be tentative and will be updated each month as dates get closer.

GRTY 2014-2015 Calendar

Mar. 1 Service Planning Session

#3—Noon – 2:00 p.m. at Temple.
BRING LUNCH

Mar. 8*Purim Carnival/Sell Hamantaschen noon 10 – Noon at Temple
LUNCH PROVIDED

Final Service Run-through Session
#4—Noon – 2:00 p.m.

Fri. Mar. 13GRTY SHABBAT SERVICE—7:30 p.m. at Temple—Be at Temple at 7:00 p.m. Dress Up!!!

Mar. 15*Set Up Rummage Sale—9:00 – noon—PIZZA PROVIDED—

Mar. 29*Take Down Rummage Sale—9:00 a.m. – noon

*Means you can earn service hours

Advisors: Nanci Soriano H: 654-7677 cell: 222-9626

Lauren Lamont: cell: 988-3727

RSVP to ALL activities quickly

please even if you can't attend

Dues: 7-8 graders: \$25 (2nd child \$20)

9-12 graders: \$40 (2nd child \$25)

NFTY on line Registration:

www.nfty.org/no

HELP WANTED:

CARING COMMITTEE

The Caring Committee was formed to provide a meal(s) to a member in the event of a birth, death or illness. Anyone interested in being on the Caring Committee list or is interested in providing a ride to a Temple function, please contact Carol Gordon at 815-398-4214 or cggordon50@hotmail.com.

Membership

Do you know of any unaffiliated Jews looking for a congregation?

If so, contact Elisa Whitman, membership chairperson at 815.636.1007

PLANT A TREE IN ISRAEL
Commemorate happy occasions...
births, engagements, marriages,
anniversaries, graduations
or memorialize a loved one.
"A tree lives on forever in our
sacred land"

Call Carol Gordon
398-4214

or email requests to:

cggordon50@hotmail.com

Effective April 1, 2013 the price will be
\$18.00

sponsored by
Hadassah

Jewish National Fund

Torah
Study Group
Saturday Morning 10:00 AM

The Tree of Life

Remember a loved one or celebrate a wonderful occasion by noting it forever on the Temple Beth-El Tree Of Life in the foyer. Contact the Temple office for details.

The Temple Bulletin goes away to College....

If you have a student heading off to college, we would like to send him or her a copy of the Temple Bulletin. Let them have one more connection to home while they are away. All we need are name and address, and we will do the rest. Give Joyce a call in the office, and add one more piece of mail from home for your student.

Visit the Temple Beth-El
New Web Site Address...

<http://templebethel-rockford.org/>.

Check it out!

Have a Date to add?

Well!

Jayskl@aol.com

The Yiddish Corner

plotz

plotz

Literally to explode. Don't have a stroke!

I am home all day with two kids under the age of 6 and my husband comes home and wants to know why I am tired. I could just **plotz**!

On the Lighter Side...

A little woman called Mount Sinai Hospital. She said, 'Mount Sinai Hospital?'

Hello. Darling, I'd like to talk with the person who gives the information about the patients. But I don't want to know if the patient is better or doing like expected, or worse, I want all the information from top to bottom, from A to Z.'

The voice on the other end of the line said, 'Would you hold the line, please, that's a very unusual request.' Then a very authoritative voice came on and said, 'Are you the lady who is calling about one of the patients?' She said, 'Yes, darling! I'd like to know the information about Sarah Finkel, in Room 302.' He said, 'Finkel. Finkel. Let me see. Feinberg, Farber --- Finkel.'

Oh yes, Mrs. Finkel is doing very well. In fact, she's had two full meals, her doctor says if she continues improving as she is, he is going to send her home Tuesday at twelve o'clock.' The woman said, 'Thank God! That's wonderful! She's going home at twelve o'clock! I'm so happy to hear that. That's wonderful news.'

The guy on the other end said, 'From your enthusiasm, I take it you must be one of the close family.'

She said, 'What close family? I'm Sarah Finkel! My doctor don't tell me nothing!'



March 2015 Religious Services

March 4
Purim Service 6:00 pm

March 6
Family Shabbat Service 7:30 pm

March 13
GRTY-led Erev Shabbat Service 7:30 pm

March 20
Erev Shabbat Service 7:30 pm

March 27
Kabbalat Shabbat Service 6:00 pm

Temple Beth-El Leadership

Rabbi	Binah Wing
President	Brina Grigg
President Elect	Jim Gesmer
V.P. Communication	Ellen Salley
Bulletin Publisher	Jay Sklar
Web Maven	Harvey Melamed
V.P. Community	Karen Zussman
V.P. Finance	Sharon Goldsand
Treasurer	Robert Levy
V.P. Ways & Means	Mary Roufa
V.P. Education	Lauren Lamont
School Principals	Goldie Pekarsky & Adrian Grubb
V.P. Religious Functions	Andrea Levey
V.P. Building & Grounds	Jordan Towne
Jewish Federation Rep.	Ellen Dietz
Past President	Jay Sklar

The Temple Beth-El Bulletin is a monthly publication of Temple Beth-El, Rockford, Illinois. Items for the bulletin should be submitted to the Temple office. Typewritten is acceptable, but text format on a computer disk or e-mailed to the publisher, Jay Sklar jayskl@aol.com, is preferred.