



BULLETIN

December 2015 19 Kislev - 19 Tevet 5776

Mission Statement: Temple Beth-El is a congregation of Jews and their families building a community committed to participation in all aspects of Jewish life. By community, we mean a group of diverse people who share a strong connection fostered by Temple Beth-El. By participation, we mean that all members will partake in and support the spiritual, cultural, educational and social life of Temple Beth-El.

Pam Reum to Manage Gift Shop

Since the inception of a Gift Shop at Temple Beth-El, the duo of Milly Kaplan and Susan Rosenfeld have been ably at the helm of this Temple mainstay. It has been some eleven years that the Gift Shop has made significant contributions to the Temple General Funds through the purchases by the congregation and by individuals outside the congregation. Pam Reum has officially taken over the management of the Gift Shop under the watchful eye and help of Milly Kaplan. Our office administrative assistant, Joyce Hulstedt, will be available during the week, and the

...the Gift Shop will be open with Pam on Sundays from 10:00 AM until Noon when Sunday school is in session.

Gift Shop will be open with Pam on Sundays from 10:00 AM until Noon when Sunday school is in session. Watch for more news about the Gift Shop as we roll into the New Year. Do stop by, say "hi" to Pam and see what the Gift Shop has to offer.

Chaverim,

I suppose like many Jewish children, one of my kids' favorite holidays is Hanukkah. Yes, they love latkes, sufganiot (fried donuts) and being together for the lighting of the candles, but the main reason they like it is because of the presents. We've worked hard over the years to get them to remember the story and the meaning of the holiday, as well, but they still love the presents. It's hard to communicate to kids that happiness doesn't really come from getting more stuff. It's even harder for some adults to learn that.

One family I know, who I love and admire, has a practice that I'd like to adopt, at least in part, and I'd encourage you to as well. What do they do? They come up with a mitzvah for every night of Hanukkah to go along with the rest of their celebration. This helps them focus on what is really important in the world rather than getting more stuff. They make a practice of living out the Jewish concept of *tikkun olam*, the perfection of our world.

Their list of planned activities includes: 1) Enjoying the traditions of Hanukkah – singing, latkes, dreidel and eating Fair Trade chocolate gelt. 2) Going unplugged for a night, playing games and writing the top ten things they love, admire, respect etc. about a person in the family (name drawn out of a bag). 3) Helping to serve the home-



From Rabbi Binah Wing

Whatever we do, the point is to get outside of our own desire for more "stuff," and try to focus on others.

INSIDE THIS ISSUE:

| | |
|-----------------------------|--------|
| President's Message | 3 |
| Service Schedule | 14 |
| From the Board of Directors | 2 |
| Religious School News | 4 |
| Friends of Temple Beth-El | 11, 12 |
| Birthdays & Anniversaries | 5 |
| Yahrzeits and Contributions | 6 |
| Calendar | 15 |

less and bringing homemade cookies. 4) Helping out at the community food bank for their holiday program. 5) Writing letters to deployed troops 6) Writing letters to support a cause they believe in. 7) Buying some toys for the local holiday toy drive. 8) Making healthy snack bags filled with non-perishable snacks to keep in their car to give out to homeless people they encounter with a note that lets them know that they care, they see them and that they matter.

Wow. I wish that I could do all of those things. That's one reason why I love and admire this family. But I do think that we can do some of these things. How about you? Here are a few more suggestions – cull some of the children's books from your shelves and donate them to Rockford WAVE (a domestic violence prevention organization and shelter); buy some new socks and underpants for Project Undershare; bring games or puzzles to the children's floor of local hospitals, games or puzzles for a local nursing home; help an elderly neighbor clean or grocery shop.

The mitzvah we do doesn't have to involve strangers either. We can fulfill the mitzvah of respecting family by making time one night to Skype, Facetime or just call three special relatives. We can invite our neighbors over to share our traditions with them.

Whatever we do, the point is to get outside of our own desire for more "stuff," and try to focus on others. Hopefully if we can do this, we will experience true joy and happiness. May Hanukkah bring light into the darkness for each and every one of us.

Chag urim sameach,
Rabbi Wing

....cull some of the children's books from your shelves and donate them to Rockford WAVE (a domestic violence prevention organization and shelter); buy some new socks and underpants for Project Undershare.....

From the Temple Board.... By Secretary Ellen Salley



The Temple board met on November 11th. Lauren Lamont gave our D'Var Torah which was in honor of Thanksgiving and based on the Ki Tavo Torah portion. She said many of us are grateful for our everyday things but we need to remember why and how we became grateful for these things. In Ki Tavo, Moses is bringing the people of Israel into the land of Israel and taking the fruits of the soil for the first time. Lauren reminds us not only to be grateful but to continue to thank God for our blessings and to help others that are less fortunate than we are. We also celebrated Rabbi's birthday.

Rabbi reported that there are 7 students in Confirmation, and everything is going well. She attended a very good seminar that talked about helping her find out her bias. She hopes to use this knowledge to reach out to African American religious groups in Rockford.

Rob reported that our budget looks good although it shows we have a negative loss because our major fundraisers are in the spring. Sharon reported that as of now we have 88 families that have pledged \$124,008. The committee feels that they have been too optimistic in their 5-year plan in the areas of pledges and fundraising so they will be looking for creative ways to raise money. Anyone who has a fundraising idea can contact Mary Roufa. She is meeting with some Temple members to brainstorm some new ideas. The Foundation did better in October with a 4.2% increase, although we are still down 4.88% for the year.

The Religious Functions committee will hold a Rosh Hashanah dinner next year which will be headed by Connie Paris. The Hanukkah dinner will be on December 11th at 6:00. It was suggested that we go bowling some time after a 6:00 service.

Adrian and Goldie are still looking for parent volunteers to help with Sunday School activities.

Mary reported that the first Food-A-Rama meeting will be on December 16th and preparation for the Rummage Sale is underway.

The Federation Kick-Off Dinner was a success, raising \$23,200 in pledges and collecting \$16,700 already. The Synagogue will celebrate Hanukkah at the home of Jean and Steve Geller on December 13th. Representative Kinzinger presented an update on the Middle East at his office on November 23rd. The Israeli Consulate will be coming to Rockford sometime to meet with business members of our community.

The board is looking at designs for the Memorial Alcove.

Congratulations to the following: Andrea Levey for taking over the Temple Library, Warren Goldsand who will be heading our adult education committee and Goldie, Ronit, Barbara Brown and Sharon who will be chairing Lox Box.

Brina's Bits

This secular calendar year has passed so quickly! Thanksgiving is a memory, and Hanukkah is just a few weeks away. The Tatman and Pekarsky families will

not forget the first snowfall of the year as our congregation celebrated Aron's Bar Mitzvah. I knew Aron would become a Bar Mitzvah despite the weather. Unfortunately, I was unable to attend because I was in Portland, Oregon celebrating my sister Marsha's graduation, as she received her 5th dog guide.

There are three people I would like to publically acknowledge for saying yes to important positions within our Temple....they are Warren Goldsand, Andrea Levey and Pam Reum.

During the Rabbi's review process, the need and desire for Adult Education was mentioned frequently. Warren Goldsand has agreed to head Adult Education. We look forward to interesting and educational programming in the future. Warren is currently a member of the Religious Functions and Foundation committees.

As you read in the November bulletin, Andrea Levey is taking over the Library because Joel and Susan Rosenfeld have moved to be closer to their children in Colorado. Already, Andrea is making sure that our religious school students visit the library on Sundays and check out books to take home. I know that our library is in very competent hands. Andrea is the Chair of the Religious Functions Committee and is one of our Hebrew School teachers.

Milly Kaplan and Susan Rosenfeld have run the Temple Gift Shop for over ten years. With Susan moving to Colorado, Milly has asked that someone begin to take over running the Gift Shop. I am happy to announce that Pam Reum has agreed to step into that role. With Milly's help, Pam will be in the Gift Shop helping you with your gift and holiday purchases. Pam is a regular at Friday night Shabbat services. Let her know the kinds of things you might like to see in our Temple Gift Shop.

Our Temple is only as strong as our membership. Thank you all for your support.

I want to wish you a Happy Hanukkah and a Happy, Healthy New Year!

Shalom,
Brina Grigg

Last month I started to answer some of the questions about "choreography" during prayer, such as bending our knees, bow-

ing, etc. This month, let's begin to learn about the Amidah or Tefilah prayer. As you may have heard me say before, the Tefilah is actually a compilation of several different prayers put together in one block of the liturgy, sometimes called a "rubric." The Tefilah is modeled after the way in which a person would approach a king with a request in the ancient world. The king had tremendous power and one needed to approach the king with respect and humility. One would begin by taking three small steps backwards and then three small steps forward, symbolically and formally entering the presence of the king. So too at the beginning of the Tefilah, during the words "Adonai s'fatai..." "Adonai, open up my lips..." you might see someone taking three small steps backwards and then forwards as a way to enter into God's presence in a more formal way. Then one would begin by offering praise to the king through one's ancestors. This was the opening petition and one would bow at the beginning and the end of it. The prayer that we call the Avot v'Imahot that mentions the names of our spiritual ancestors (Abraham and Sarah etc.) is modeled after this part. We bow at the beginning of this prayer and at the end of it during the words "Baruch Atah Adonai." One bends the knee and bows during the words "Baruch Atah" and then stands straight at the word "Adonai." In the ancient approach to the king, the petitioner would then praise the king's might and holiness. This translates to the next two prayers in the Amidah – the Gevurot and the Kedusha, which praise God's might and holiness, respectively. People tend to think that because the melody of the chanting is the same, that one bows at the end of the Gevurot and the Kedusha as well, but this is not correct. Traditionally, one only bows at the beginning and the end of the Avot v'Imahot. Much of the choreography of prayer

Ask Rabbi Wing



SCHOOL DAZE

200 Words or Less...

By Goldie & Adrian



Hope you had a wonderful Thanksgiving. Up next...can you believe Chanukah begins on December 6th?! Look for those dreidels or stop in the gift shop to buy some!

Sunday, December 13 is our Chanukah party at Religious School. Please stop by to enjoy the morning and be sure to partake in Ronit's holiday treats! We will be collecting donations for Parkinson's disease in memory of beloved past congregant Sterne Roufa.

Also on December 13 is our OSRUI camp recruitment morning with guest Jerry Kaye, director of our favorite Jewish camp in Oconomowoc, WI. We have some surprises for Jerry and hope he has some for us! Come join us at 10:00 to enjoy the newest camp video and find out all you would ever want to know about camp. Come with your questions. Jerry will answer them! The 13th is our last session before winter break. We will return to school on January 6 for Hebrew classes and on January 10 for Sunday School.

We would like to congratulate Aron Tatman on becoming a Bar Mitzvah on November 21. Mazel tov to his entire family!

Note to 5/6 grade parents: you have received information regarding the special weekend retreat planned for your children at OSRUI camp in February. Discuss it with your children and return the registration forms at your earliest convenience. Thank you.

Enjoy your winter break. Stay warm, healthy and safe. Till then, Shalom.

Continued from Page 3

takes place during the Amidah rubric. We'll cover a bit more of it next month! Keep those questions coming!

Please email your questions to:

templebethel1963@gmail.com

The Rabbi will answer your questions and maybe use them in sermons or other discussions as well.

We will not publish the names of the people who submit the questions, but will make sure that those who submit the questions will get the answer.

Letters to the Editor...

ROCK RIVER PANTRY DONATION

Thank you Temple Beth-El members. You again have performed a great mitzvah by your generous donations to our annual High Holy Days collection of food and cash donations to the Rock River Pantry. The Pantry provides needed food to many families in the Rockford Area. This year we provided 302 lbs. of food and cash donations totaling \$1654.76! The cash donations included \$500 from the Cy Sachs fund. We exceeded last year's donations. Mazel tov!

I thought that you might want some information from Kim Adams, executive director of the Pantry. 40% of all the recipients of food from the Pantry are children, 6% are adults over the age of 65 and the majority are families. As you can imagine, the impact of hunger on children has lasting effects on their academic and emotional growth. Seniors often have to make a decision between buying needed medication and food. Families that need the services of the Pantry have incomes at or below the poverty level. Cash donations allow the pantry to purchase food at 2-3 times the retail rate, and 93% of all cash donations support the Pantry's program. All food donations remain in this community.

Faye Marcus and Karen Zussman

10 Minutes of Torah

UNION FOR REFORM JUDAISM'S
DEPARTMENT OF LIFELONG JEWISH LEARNING

The Union will send you a one page e-mail each day on a topic of Jewish Interest. All you need to do is find 10 minutes a day to "do Torah."

Sign up by logging on to
WWW.urj.org/Torah/Ten

December Oneg Committee

December 4

Lisa and Mitch Kopnick
Lisa and Rob Levy

December 11

Hanukkah Dinner

December 18

Paula and Jeff Lash
Molly and Dan Libman

December 25

No oneg

The Temple
Beth-El
Family greatly
appreciates and
thanks our Oneg
Hosts for helping to
make our Services
more meaningful
and offering an op-
portunity for us all
to mingle and
socialize.



POTATO PANCAKES FOR PARKINSON'S

Please come to our Potato Pan-
cakes for Parkinson's Disease
Event taking place on
December 13. Sponsored by the
Jewish Federation and TBE Reli-
gious School



Lunch will be served from 11:30-12:30 at Temple Beth-
El, 1203 Comanche Dr. Donations will be accepted for
the potato latke lunch, and 100% of the donations will
be sent to Hadassah for Parkinson' research.

For more information, please contact Goldie at the
Jewish Federation - 815-399-5497 or
rockfordfederation@sbcglobal.net

**This event is in honor and
memory of our friend,
Sterne Roufa**

December Birthdays & Anniversaries

Adults

Payton Kammerer 12/1
Yana Peysakhovich 12/1
Lauren Weiss 12/3
Aron Tatman 12/4
Laura Sage 12/5
David Larico 12/6
Arielle Einhorn 12/8
Susan Kamin 12/10
Philip Sklar 12/12
Jenna Glassman 12/13
Sean Pekarsky 12/15
Bud Wiener 12/17
Michael Whitman 12/19
Brian Bear 12/21
Geoffrey Feinstein 12/21
Mitchell Busch 12/26
Rachel Kammerer 12/26
Len Bernstein 12/27
James Gesmer 12/27
Jennifer Grubb 12/27

Brittany Busch 12/28
Gregory Rozman 12/29
Jill Shacter 12/31
Jillian Deutsch 12/31

Children

Eloise Towne 12/08/06
Adam Ahles 12/11/10

ANNIVERSARIES

Jerry & Connie Paris
12/14/69
Warren & Sharon
Goldsand 12/20/70



The Temple Beth-El Gift Shop



GIFT SHOP HOURS

Monday—Friday, call the office

Sunday 10am - noon*

*Open Sundays when school is in session.

If you need to visit the shop at another time, please call
the Temple office (398-5020) or Pam Reum (979-9497)

YAHZEIT LIST

If you are interested in having your loved one's name on the Yahrzeit list, please call Joyce in the Temple Office, 398-5020

Read Dec 4

Rudolph Wertheim
Joseph Esrick
Murry Halikman
Rose Osran
Rose Beiman
Rachel Feinstein
Leonard Block
Beila Levina
Mollie Sklar Stern
Esther Rothstein
Isador J. Behr
Shirley Ruthe Chamberlain
Harry Chemerow
Rabbi Saul B. Appelbaum
Walter Oppenheimer
Harold Vision
Max Brenner
Ralph Levin

Read Dec 11

Zella Turcott
Lillian Reicher
Allen B. Cohen
Louis Marks
Gitel Furen
Joe Kimmelman
Morton Bernstein
Bernice Fusch
Dr. Oscar Weinstein
Ruth Oberndorf
Bess Weinstein
Morris Osran
Ben Rossin
Herbert Weissbauch

Read Dec 18

Eva G. Patlove
David L. Hillman
Bernice Ernstein
Goldie Simon
Lillian Bedsole
Walley Peters

Read Dec 25

Evelyn Goldberg Kupperman

George L. Shanhouse
Rae Sachs Bamberger
Aron Kleinberg
Martha Silverstein
Ann Behr Alter
Max Swerdlik
Marcia Holmstrom
Marion Weiner
Wally Daniel
Sol Levy



MEMORIAL BOARD

Honor the memory of your loved ones by placing their names on the board in our memorial alcove. Please supply the Temple office with the name, date of birth and date of death. The minimum donation is \$200. The light alongside each name is lit every year to mark the anniversary of the death, and the name ap-



CONTRIBUTIONS TO OUR FUNDS

Garten Fund

In memory of Arthur Zussman
-The Zussman Family

Landscaping Fund

Congratulations to Connie and Jerry Paris and Jean and Steve Geller on receiving the Distinguished Achievement Award from the Jewish Federation
-Milly Kaplan

Lazarus Fund

In memory of Jan Lazarus
-Sandy Lazarus Keller and Family

Rabbi's Discretionary Fund

In honor of the birth of Landon George Soriano
-Rose Gulatto

Mazel Tov to Nanci and Marc Soriano on the birth of grandson Landon George
-Joy and Steven Schneider

In honor of Connie and Jerry Paris receiving the Distinguished Achievement Award from the Jewish Federation
In honor of the birth of Landon George Soriano
In honor of Eric and Robin Lamont's wedding
-Sara and David Deutsch

Unrestricted Donation

In memory of Howard Hart
-Donna and Michael Kelner

Thank You.....

The Temple has been the recipient of donations from the Temple Family in the name of many funds in order to supply much needed money for worthwhile programs and projects. We would like to spotlight a couple of these funds.

The Robert and Joel Garten Youth and Scholarship Fund

is to provide camperships for religious school students. This fund is administered by the Education Committee and the Rabbi.

The Michael Dermer Religious School Fund

was established for the purpose of raising money to support religious school activities. This fund is used to provide enrichment programs, scholarships and youth activities.

Landscaping Fund provides funding for enhancements to our grounds.

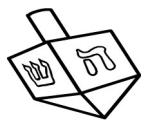
Sheldon Liebovich Fund for Families in Crisis

provides funds for Temple families who are in need at the discretion of Temple leadership.

Rabbi's Discretionary Fund provides for the Rabbi to purchase necessary items for the Temple or to help those in need, at her discretion.

Cy Sachs Fund provides funds to be used for community-wide projects.

Hannah & Herbert Saal Fund provides funds for the betterment of Temple Beth-El.



**Temple Beth-El Annual
Chanukah Dinner**
Friday, December 11th
6:00 PM -Shabbat Service, Dinner to Follow



Send your reservations to:
Temple Beth-El
1203 Comanche Dr.
Rockford, IL 61107
Cost: Free (donations will be accepted)

We ask that each family bring a dish to pass.
 A-P bring a side dish/salad Q-Z bring a dessert

Ronit's chicken will be served

If you are making Latkes let Andrea know and that will be your dish.

Also, it is a tradition for each family to **bring a menorah** to light at the table. It is very special as we all light our menorahs together, as one congregational family; so, please remember to bring your menorah. We will provide the candles and the matches.

Please contact Andrea Levey or the Temple office with your reservation

If you have any questions or would like to help out with this dinner, **(we are looking for volunteers to help with this!)** please don't hesitate to contact Andrea Levey 815-399-7112.

Name _____ Number of people _____

Please contact the Temple office with your reservation!!!

| Memorial and Tribute Donation Form | | | |
|--|--|---|--|
| <p>From:</p> <p>Name: _____</p> <p>Address: _____</p> <p>City: _____ State _____ Zip: _____</p> <p>For: (check one and fill in names as appropriate)</p> <p><input type="checkbox"/> In Memory of: _____</p> <p><input type="checkbox"/> Speedy Recovery to: _____</p> <p><input type="checkbox"/> Congratulations to: _____</p> <p><input type="checkbox"/> In Honor of: _____</p> <p><input type="checkbox"/> Other: _____</p> | <p>To: Send the acknowledging card : <input type="checkbox"/> Same as from, or: Name: _____</p> <p>Address: _____</p> <p>City: _____ State _____ Zip: _____</p> <table border="1" style="width: 100%; border-collapse: collapse;"> <tr> <td style="width: 50%; padding: 5px;"> <p>Donation:</p> <p><input type="checkbox"/> Triple chai (\$54)</p> <p><input type="checkbox"/> Double chai (\$36)</p> <p><input type="checkbox"/> Chai (\$18) <input type="checkbox"/> \$10</p> <p><input type="checkbox"/> \$4 (Min.)</p> <p><input type="checkbox"/> Other: _____</p> </td> <td style="width: 50%; padding: 5px;"> <p>Fund:</p> <p><input type="checkbox"/> Garten <input type="checkbox"/> Powell <input type="checkbox"/> Lazarus <input type="checkbox"/> Dermer <input type="checkbox"/> Building <input type="checkbox"/> Woodruff <input type="checkbox"/> Rabbi's Discretionary</p> <p><input type="checkbox"/> Pap <input type="checkbox"/> Kupperman <input type="checkbox"/> Landscaping <input type="checkbox"/> Gifts&Flowers</p> <p><input type="checkbox"/> Sachs <input type="checkbox"/> Liebovich Fund</p> <p><input type="checkbox"/> Other: _____</p> </td> </tr> </table> | <p>Donation:</p> <p><input type="checkbox"/> Triple chai (\$54)</p> <p><input type="checkbox"/> Double chai (\$36)</p> <p><input type="checkbox"/> Chai (\$18) <input type="checkbox"/> \$10</p> <p><input type="checkbox"/> \$4 (Min.)</p> <p><input type="checkbox"/> Other: _____</p> | <p>Fund:</p> <p><input type="checkbox"/> Garten <input type="checkbox"/> Powell <input type="checkbox"/> Lazarus <input type="checkbox"/> Dermer <input type="checkbox"/> Building <input type="checkbox"/> Woodruff <input type="checkbox"/> Rabbi's Discretionary</p> <p><input type="checkbox"/> Pap <input type="checkbox"/> Kupperman <input type="checkbox"/> Landscaping <input type="checkbox"/> Gifts&Flowers</p> <p><input type="checkbox"/> Sachs <input type="checkbox"/> Liebovich Fund</p> <p><input type="checkbox"/> Other: _____</p> |
| <p>Donation:</p> <p><input type="checkbox"/> Triple chai (\$54)</p> <p><input type="checkbox"/> Double chai (\$36)</p> <p><input type="checkbox"/> Chai (\$18) <input type="checkbox"/> \$10</p> <p><input type="checkbox"/> \$4 (Min.)</p> <p><input type="checkbox"/> Other: _____</p> | <p>Fund:</p> <p><input type="checkbox"/> Garten <input type="checkbox"/> Powell <input type="checkbox"/> Lazarus <input type="checkbox"/> Dermer <input type="checkbox"/> Building <input type="checkbox"/> Woodruff <input type="checkbox"/> Rabbi's Discretionary</p> <p><input type="checkbox"/> Pap <input type="checkbox"/> Kupperman <input type="checkbox"/> Landscaping <input type="checkbox"/> Gifts&Flowers</p> <p><input type="checkbox"/> Sachs <input type="checkbox"/> Liebovich Fund</p> <p><input type="checkbox"/> Other: _____</p> | | |

GRTY NEWS

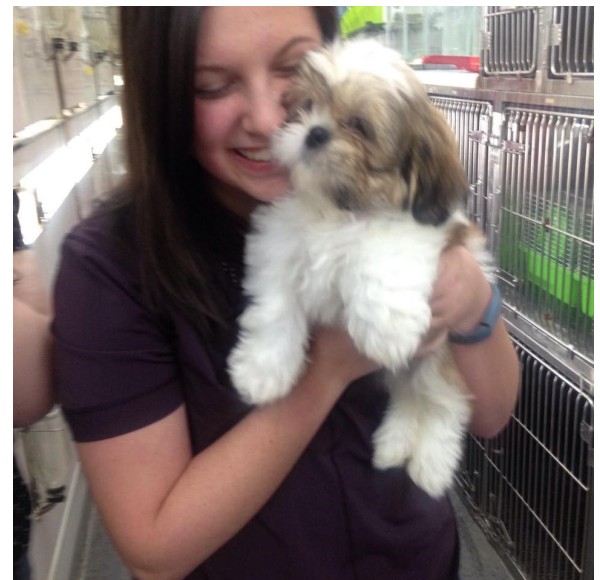
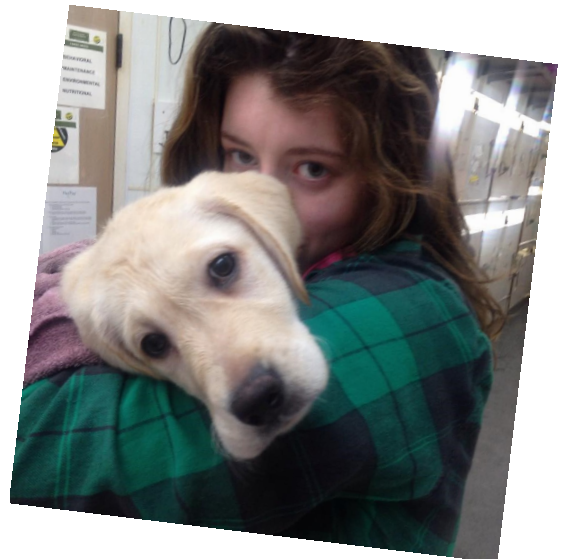
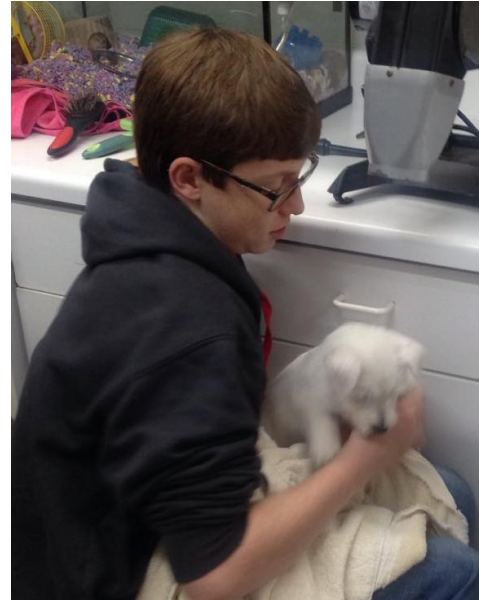
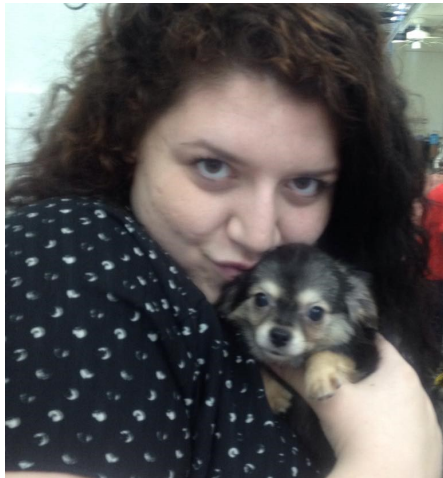
Submitted by:
Co-President
Emily Shore

Each year, GRTY adds new events to the calendar. On November 8th, GRTY ventured out to the Gymnastic Academy's Trampoline Park due to many requests from mem-

bers. For two hours, members jumped around, flipped, fell into foam pits and got pretty competitive over multiple games of dodge-ball!

One of GRTY's favorite events was held in the fall this year. On November 21st and 22nd, GRTY volunteered at Petland. After arriving, the teens split into two groups. One group washed and dried the puppies, and the other got a chance to play with them and tire them out. Of course, many left brokenhearted leaving the adorable puppies.

Upcoming events include the Laser Quest/Shogun Chanukah Party on December 13th, NFTY's Winter Kallah from December 18th to the 20th and the Soup Kitchen on December 27th. Please RSVP to Nanci about these events!





TEMPLE BETH-EL MINUTE WITH A MEMBER

*Dear TBE Friends:
Our next "Minute with
a Member" features*

Jay and Louise Gesmer. We hope you will enjoy getting to know them a bit more!

A LITTLE ABOUT OURSELVES:

We met at Northwestern University when Louise (from Cincinnati) was a sophomore and Jason (from Oak Park, IL) was a second year law student. We were married in 1954, the day after Louise's graduation. We came to Rockford in 1970 with our three elementary school-age children. Our daughter Amy Gesmer-Packman, founder and director of Boulder (CO) Suzuki Strings, is married to Dan, an astro-geophysist; Jim is a practicing attorney in Rockford and his wife Mary is a court reporter; younger son Dan designs, manufactures and sells skateboard components in Boulder, CO. Our five grandchildren range in age from 12 to 27. Adam and Joe attend school in Rockford, and Aaron is a junior at UW-Madison. David Packman works in media marketing in Los Angeles, and his sister Hannah is in graduate school at Tufts University in Boston. Jason is now retired after practicing law for 58 years. Louise taught fifth and sixth grades until she started raising the family.

MEMORABLE MOMENTS AT TEMPLE BETH-EL:

We are fortunate to be a three-generation family at Temple where all our grandchildren were named, Jim and Mary were married and Aaron and Adam celebrated their Bar Mitzvahs (with Joe's to come next year). Louise participated in an adult group Bar/ Bat Mitzvah in 1978. Over the years, we have shared in many glad and sad occasions here with friends.

FAVORITE JEWISH FOODS:

The traditional foods connected with Jewish holidays and, of course, all the goodies featured at Food-A-Rama.

OUR FIRST JOBS:

Louise worked at a switch-board during summer break from high-school. Jason pumped gas and changed oil and tires at a service station.



WHAT INSPIRES US TO DO WHAT WE DO:

In our very small Jewish community, we have always felt a responsibility to do as much as possible. Jason has served as president of the Jewish Federation, Temple Beth-El and the Hebrew Cemetery Association. Louise has been president of Hadassah. During the past 45 years, Louise and Jason have been Temple Board members and chairpersons of various committees. Between the two of us, we have been active participants in all areas of life in the Rockford Jewish world.

OUR FAVORITE THINGS TO DO IN THE ROCKFORD AREA:

Visiting Anderson Gardens, attending Rockford Symphony Orchestra performances and going to classes at Center for Learning in Retirement. We miss New American Theater and folk music performers at the original Charlotte's Web.

WE ALWAYS WANTED TO:

Louise has wanted to learn about her roots and is now working on a genealogy study of her father's family from Kletsk in Belarus. Jason would love to go to the Masters' Golf Tournament or the British Open.

TWO WEEKS AWAY FROM ROCKFORD:

We would like to return to Israel, especially Jerusalem, to revisit favorite places and experience the changes there since our previous trips.

SAVE THE DATE!!

Details in the January bulletin



Please join us for our next
Temple Beth-El Social
Get Together...
An enjoyable adult evening

A "WARM UP" NIGHT WITH TBE FRIENDS

Saturday, JANUARY 23, 2016
7:00-10:00 p.m.

The Home of
RONIT AND RONI GOLAN

The Officers and Board of Directors of the
Jewish Federation of
Greater Rockford

Cordially Invite You To Attend the

Annual Meeting



Sunday, December 6

10:00 am at Temple Beth-El, 1203 Co-
manche Dr.

Breakfast will be served at 10:00
am, / meeting will begin at 10:30 am

Please RSVP to Goldie at 815-399-5497 or
rockfordfederation@sbcglobal.net

Jewish Community Hanukkah Party

Sponsored by the Jewish
Federation,
Temple Beth-El Religious School and
Congregation Ohave Shalom

Sunday, December 13 - 11:00-12:00

Stop by and enjoy the delights of Hanukkah.
Our religious school students will be treated
to a special morning of games, crafts, and
yummy Hanukkah treats by Ronit.

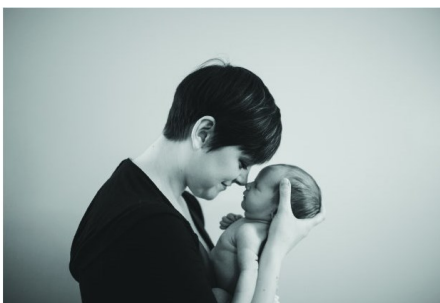
Bring your friends and family.
Everyone is welcome to this free
event.



Mindy Joy PHOTOGRAPHY

PORTRAITURE EVENT COMMERCIAL

Providing photographic
coverage in Rockford and the
surrounding areas.



Mindy Joy Young
Call me: 815.985.4005

Look up info & Pricing
mindyjoyphotography.com

**Inquire about dates
& reservations**
mindy@mindyjoyphotography.com

Friends of Temple Beth-El

It's a.... Car Mitzvah



**Our car mitzvah
donation program
has earned over
\$40,000.
in the last 8 years.**

Our car mitzvah donation program has earned over \$40000 in the last 8 years. This comes about through the incredible generosity of our congregants. Jerry Paris has sold his Midas Auto Repair facility on North Main St. after being in business for 38 years. It is now owned by Butitta Bros and the manager's name is Neil. **The new organization has agreed to continue the car donation program under the same arrangement as before.**

Please contact the new manager at 815-962-7914 and he will insure that Temple is properly rewarded. If you have any questions, please call Jerry at 815-222-6016.

Thank you for your support.

3012 North Main Street Rockford, IL 61103

815-962-7914

Huge Selection of Stunning Wedding Invitations

- ✦ Graduations ✦
- ✦ Bar/Bat Mitzvah ✦
- ✦ Mis Quince Años ✦
- ✦ Social Parties ✦
- ✦ Anniversaries ✦
- ✦ Business Cards ✦

5411 East State St. • Rockford, Illinois
 815-399-3837 email: rrprint@att.net

1478590

Brian Thomas Photography

Bar/Bat Mitzvah Specials

815 395-1105

brianthomasphotography.com

OFFICE: 1.815.637.0165
 CELL: 1.815.222.6076
 FAX: 1.815.222.6076
 TOLL FREE: 1.888.242.6246
 EMAIL: cparis@GoGambino.com



Connie Paris
 CRS, GRI
 3815 N. Mulford Rd
 Rockford, IL 61114

gambino
 REALTORS

GoGambino.com

Compliments of Sundberg Funeral Home, Ltd.

Darryl Johnson
 Funeral Director
 215 North 6th Street
 Rockford, Illinois
 962-7743

LOCK DOCTOR
SINCE 1974

**24 HOUR
EMERGENCY CAR OPENING
& KEY SERVICE**
 foreign autos our specialty
 Lic. # 0191-000247

**Transponder
Keys**

**COMPLETE
LOCKSMITH
SERVICE**

WE DO JOBS NO OTHER SHOP CAN
 AUTO • HOME • COMMERCIAL • SAFE

874-4030
 OR CALL 968-4751

FAST, COURTEOUS SERVICE
 LICENSED, CERTIFIED
 & BONDED

3437 SOUTH BEND RD. • ROCKFORD
MASTER LOCKSMITH



BRING ON THE BOOKS!

For the past eight years, the TBE Book Sale committee has been accepting your used and/or new books for listing online or for the Rummage Sale. To date **we have raised over \$18,000!**

We accept your donations throughout the year. There is a bin in the classroom hallway (to the right of the gift shop) for you to place your donations.

ARTALÉ
 WINE CO.

WINE • BEER • LIQUOR
 CATERING: WINE PARTIES, DINNERS, PRIVATE IN-HOME TASTINGS
 6876 SPRING CREEK RD. SUITE 128, ROCKFORD, IL 61114 815.877.WINE

See our selection of Kosher Wines too!

PET SITTING BY TINA

Tina Sievers
 4921 Rolex Parkway
 Loves Park, IL 61111

Providing Quality
 Pet/House Sitting
 since 2004

Phone: 815.742.4537
 E-mail: tsievers1956@yahoo.com



Coming Attractions

January 2016

Sat. 23rd Social evening at Golan's

February 2016

March 2016

Sat. 12th Josh Zussman Bar Mitzvah

April 2016

14th, 15th and 17th Rummage Sale

Sun. 17th Chocolate Seder

May 2016

Sun. 1st Holocaust Remembrance Day

Sat. 7th Jack Holmstrom Bar Mitzvah

Wed 18th Food-A-Rama

June 2016

July 2016

August 2016

September 2016

Sat. 17th Noa Levy Bat Mitzvah

October 2016

November 2016

December 2016

Tentative Date *
Temple Board

Meets the 2nd Wed. each month
Library 7:00 PM

We hope this page of Coming Attractions helps you plan ahead for activities at Temple Beth-El. Please understand that some dates and times might be tentative and will be updated each month as dates get closer.

Have a Date to add?
Well!
Jayskl@aol.com

GRTY 2015-2016 Calendar

Dec. 13 Laser Quest & Shogun Hanukkah Party: 3:20-7:00 p.m.

Dec. 18-20 NFTY Winter Kallah: OSRUI-Oconomowoc, WI

Dec. 27*Soup Kitchen: (4/shift) 9-11:45; 11:30-1:30 p.m.

***Means you can earn service hours**

Advisors: Nanci Soriano H: 654-7677 cell: 222-9626

Lauren Lamont: cell: 988-3727

RSVP to ALL activities quickly please even if you can't attend
Dues: 7-8 graders: \$25 (2nd child \$20)
9-12 graders: \$40 (2nd child \$25)

NFTY on line Registration:
www.nfty.org/no

HELP WANTED: CARING COMMITTEE

The Caring Committee was formed to provide a meal(s) to a member in the event of a birth, death or illness. Anyone interested in being on the Caring Committee list or is interested in providing a ride to a Temple function, please contact Carol Gordon at 815-398-4214 or cggordon50@hotmail.com.

Membership

Do you know of any unaffiliated Jews looking for a congregation?
If so, contact Elisa Whitman, membership chairperson at 815-988-2134

PLANT A TREE IN ISRAEL
Commemorate happy occasions...
births, engagements, marriages,
anniversaries, graduations
or memorialize a loved one.
"A tree lives on forever in our
sacred land"

Call Carol Gordon
398-4214
or email requests to:
cggordon50@hotmail.com
Effective April 1, 2013 the price will be
\$18.00
sponsored by
Hadassah
Jewish National Fund

Torah
Study Group
Saturday Morning 10:00 AM

The Tree of Life

Remember a loved one or celebrate a wonderful occasion by noting it forever on the Temple Beth-El Tree Of Life in the foyer. Contact the Temple office for details.

The Temple Bulletin goes away to College....

If you have a student heading off to college, we would like to send him or her a copy of the Temple Bulletin. Let them have one more connection to home while they are away. All we need are name and address, and we will do the rest. Give Joyce a call in the office, and add one more piece of mail from home for your student.

Visit the Temple Beth-El
New Web Site Address...

<http://templebethel-rockford.org/>.

Check it out!

The Yiddish Corner

Balebos

bol-e-Boss

The head of the house-in charge

When it comes to the house, there is no question; your mother is the "balebos."

On the Lighter Side...

The El Al Aircraft

The El Al plane landed at Ben Gurion Airport and, as it taxied to the terminal, the voice of the captain was heard:
"Please remain seated with your seatbelts fastened until this plane has come to a complete stop at the gate and the seatbelt signs have been turned off.

We also remind you that cell phones may not be used until the exit doors have been opened."

"To those of you still seated, we wish you a Merry Christmas, and hope you enjoy your visit to Israel."

"To those of you standing in the aisles talking on your cell phones, Happy Hanukkah and welcome back home."



December 2015 Religious Services

December 4

Family Shabbat Service 7:30 pm

December 11

Erev Shabbat Service 6:00 pm
Hanukkah Dinner to follow

December 18

Erev Shabbat Service 7:30 pm

December 25

Kabbalat Shabbat Service 6:00 pm

Temple Beth-El Leadership

| | |
|--|-----------------------------------|
| Rabbi | Binah Wing |
| President | Brina Grigg |
| President Elect | Jim Gesmer |
| V.P. Communication | Ellen Salley |
| Bulletin Publisher | Jay Sklar |
| Web Maven | Harvey Melamed |
| V.P. Community | Karen Zussman |
| V.P. Finance | Sharon Goldsand |
| Treasurer | Robert Levy |
| V.P. Ways & Means | Mary Roufa |
| V.P. Education | Lauren Lamont |
| School Principals | Goldie Pekarsky & Adrian Grubb |
| V.P. Religious Functions | Andrea Levey |
| V.P. Building & Grounds | Jordan Towne |
| Jewish Federation Rep. | Ellen Dietz |
| Past President | Jay Sklar |

The Temple Beth-El Bulletin is a monthly publication of Temple Beth-El, Rockford, Illinois. Items for the bulletin should be submitted to the Temple office. Typewritten is acceptable, but text format on a computer disk or e-mailed to the publisher, Jay Sklar jayskl@aol.com, is preferred.