

TEMPLE BETH-EL



BULLETIN

August 2016 26 Tammuz - 27 Av 5776

1203 Comanche Drive

Rockford, Illinois 61107 815-398-5020

Mission Statement: Temple Beth-El is a congregation of Jews and their families building a community committed to participation in all aspects of Jewish life. By community, we mean a group of diverse people who share a strong connection fostered by Temple Beth-El. By participation, we mean that all members will partake in and support the spiritual, cultural, educational and social life of Temple Beth-El.

Temple Landscape Needs Your Help

The Temple is very fortunate to have the beautiful landscaping that it does.

Thanks to Barbara Simon and her crew, the corner of Guilford and Comanche is a beautiful variety of trees, shrubs, flowers and arrangements. As any homeowner is aware, landscaping is time consuming and expensive.

We are in need of tree trimming, tree removal and other work that can't easily be done by our own people.

The landscaping fund is looking for donations for this work. The fund has received some donations and is looking for additional help. If you can offer gardening help, that too would be greatly appreciated. It is hoped that you will remember this fund and donate so that we can continue to have the landscaping we all enjoy.

The landscaping fund is looking for donations for this work. The fund has received some donations and is looking for additional help.

Chaverim,

Shalom from a very special place – Olin Sang Ruby Union Institute – better known as OSRUI!

This is the camp of the Reform movement that is part of our region. I have been spending the last two weeks here, serving as faculty. Together with other rabbis, cantors and educators, we work with different parts of camp (*eidot*) helping to teach about Judaism and Hebrew and leading tefillot which are held each morning and evening.

I have been in an *eidah* called Kibbutz HaTzofim. They live in large tents instead of cabins (think M*A*S*H style tents with bunk beds), they eat outside, learn outside and pray outside. In fact, they try to do as much outside as possible! They also have a garden and a small *refet* with sheep, goats and chickens that they care for. It is at a far end of camp and is about a 15 minute walk from where I was staying. Because the road to it goes downhill, it is sometimes called "downstairs."

My typical day begins around 7:15am with a walk downstairs to lead morning tefillot which start around 7:40am. Then we head back upstairs for either free time or planning for the upcoming programs. Then back downstairs for lunch. Then back upstairs until 3:30pm. Then back downstairs for Hebrew. Then back upstairs. Then back downstairs for service planning with the campers (they lead in the evening), dinner and tefillot. Then back upstairs. Then back downstairs for a staff meeting with the counselors and the unit head at 9:30pm. It is a lot of walking! I am getting 16,000-20,000 steps on my tracker every day! Once I return to my living area (called The Lodge) each night around 10:15, the faculty usually gather for conversation and socializing. My day often ends between 11:30pm-12:30am! As you might imagine, I'm not getting too



From Rabbi Binah Wing

INSIDE THIS ISSUE:

President's Message	3
Service Schedule	12
From the Board of Directors	2
Religious School News	4
Friends of Temple Beth-El	9, 10
Birthdays & Anniversaries	5
Yahrzeits and Contributions	6
Calendar	13

much sleep!

So, you also might be wondering, if the days are so long and exhausting, what is it about camp that I love? Well, here are just a few things:

Judaism is everywhere. I love being in such a thriving Jewish environment. We say the motzi and the birkat hamazon at every meal. We pray two times a day. Our day is filled with Jewish learning in fun and creative ways. In addition, we use a lot of Hebrew to refer to everything – the people, the buildings, the activities. We sing Jewish songs every day. Everyone is immersed in Jewish living and Jewish values.

The emphasis on nature. While my eidah, Tzofim, spends the most time outdoors, most of the rest of the camp does as well. It feels great to be out in nature so much of the day. Even when it's been hot and humid, it feels very in tune with nature to be in it. I especially love the prayer spaces (beit ha-tefilah) which, in Tzofim, is surrounded by trees and deep woods.

The ruach (this is the Hebrew word for spirit or energy). Seeing so many Jewish kids loving, living and celebrating Judaism is quite amazing and inspiring. Together with the counselors, there is so much fun energy. It is inspiring to watch and be a part of. In addition, I learn new melodies for prayers and new songs, too. I find myself renewed after being here.

Shabbat. There is nothing quite like Shabbat at camp! It begins with each eidah (unit) having their own Erev Shabbat services which are filled with joyful song and usually a story. Then we all go up to the chadar ochel (dining hall) and I get to have dinner with about 700 of my closest friends! It's great! All the song leaders play songs while the campers enter and everyone sings and sings! We all greet each other with hugs and "Shabbat Shalom." After dinner, everyone gathers for Shabbat Shira. This is quite the experience. All the campers and counselors sit in a big group with about 7-8 song leaders in the middle. And everyone sings at the top of their lungs. There are hand motions that some of the campers have added on to the songs. It is quite an amazing sight. If you ever had worries about the future of Judaism, singing at Shabbat would give you hope for the Jewish future.

Well, there is so much more I could tell you but suffice it to say that I've had a really wonderful time. I also look forward to returning home and seeing all of you again as we begin to prepare for another year together.

Shalom,
Rabbi Wing

From the Temple Board.... By Secretary Ellen Salley



The Temple Board met on July 13th, 2016. Jim Gesmer took over as president. He thanked both Brina and the Rabbi for helping him make the transition. The first item Jim brought up was the D'Var Torah. He said he would like to continue with this, and the board agreed. Larry Pearlman approached Jim about making a strategic plan for our Temple. The board will be discussing this idea at a later meeting. Also, Wendy Huss will be helping us update our Temple media-- our web site, facebook, and twitter.

Rabbi has been busy leading a vigil for the Orlando victims, planning the Dairy Fair Shabbat service, and preparing for OSRUI. She is working with a couple who is getting married and with the families whose children are becoming Bar and Bat Mitzvah. She is also meeting with the Sunday School principals and getting ready for the High Holy Days. Rabbi shared some information about Shop with a Cop. The board decided to donate to this cause, and the Temple name will be in the information about their fundraiser as one of the contributors.

Sharon reported that the year end budget was not as bad as presented. The board decided that the refrigerator/freezer could be paid for by one of the Temple funds instead of out of the building and grounds line item. We still are negative for the year however.

Brina reported that some Temple members increased their dues pledges for this year, and, so far, we have 42 pledges. Eighteen of these are paid in full.

The Foundation ended the month of June on a slightly positive note with an increase of .45%.

Andrea Levey reported that the High Holy Days are well underway. This year Sukkot and Simchat Torah are on Sundays, so the services for the congregation will be held during Sunday School. The Hanukkah dinner would fall on December 30th this year, so the committee is discussing whether to hold it or do something in its place.

The social at the Huss home went well, and Karen is working on a social for the fall or winter. For the High Holy Days this year, we will be collecting for both the Rock River Food Pantry and the Northern Illinois Food Bank. We will be collecting plastic and brown paper bags along with small personal care items for the Rock River Pantry. Some of the plastic bags will be given to a group who weave them into sleeping mats for the homeless. We will be collecting food and donations for the Northern Illinois Food Bank as we have done in the past for High Holy Days.

The art auction will be on November 5th at a cost of \$18 per person. There will be a cheesecake dessert table

Continue please on Page 3

Jim's Jems

It seems that summer is passing by very quickly. Andrea Levey, our Vice-President of Religious Functions, has been working diligently this summer putting together the Oneg Shabbat list for the 2016-2017 year. It is

important to remember that if you are not available to serve as an Oneg host on the date assigned to you, it is not Andrea's responsibility to find a replacement or take your place. Rather, it is your responsibility to find a replacement or switch with another Temple member if you are not available to serve as an Oneg host on your assigned date.

When you receive your assigned Oneg date from Andrea, please determine as soon as possible if you will be unavailable. If so, please make arrangements for a replacement as soon as possible. Too many times, Andrea has prepared the Oneg herself when she has been told that one or both of the assigned hosts is not available. Please do not ask Andrea to either find a replacement for you if you are not available on the assigned date or to perform this obligation herself.

The job of serving as an Oneg host is not intended to be a burdensome, time-consuming obligation. Health permitting, every Temple member is expected to perform this role once per year. The basic duties of being an Oneg host only involve purchasing items to nosh on after the Shabbat Service, setting up for the Oneg and cleaning up afterwards.

Temple members are given Oneg assignments with another member. If you determine that you are not available to serve as an Oneg host on the assigned date, please call your partner to let them know and then try to switch with another Temple member instead of burdening Andrea with that task.

Another Temple member who has been very busy this summer is Mary Roufa, our Vice-President of Ways and Means. Mary and her committee are busy planning a revival of the Temple Art Auction. For many years, the Art Auction was a big fundraising event for Temple Beth-El. Temple Beth-El last had an Art Auction approximately 8 years ago. Mary and her committee have decided to revive it in a simpler and less expensive format. The Art Auction is scheduled to take place Saturday evening November 5, 2016, at Anderson Japanese Gardens. You will be receiving more details about the Art Auction in the very near future. Please do your best to attend, as Mary and her committee think that this could be a very successful fundraiser for our congregation.

-Jim

Come Join Us! Shabbat in the Park Friday, August 5th



Red Oak Picnic Area-
Rock Cut State Park
Gathering and dinner
4:30 - 6:30 pm
Service will begin at
6:30 pm

Hot dogs, buns, plates, cups, condiments, pop and plasticware will be provided. Each family or group should provide their own sides.

Temple Board Installation

As part of our Erev Shabbat Service
August 19th

Show your support for the newly
Elected board members.

Continued from Page 2

and cash bar. Mary and her committee are working on **From the Temple Board....**

By Secretary Ellen Salley

dates for the Rummage Sale and FAR.

Jay Sklar reported that the transition to the new security system is going well. He handed out key fobs to the Board members and explained how they are used. The locks on the doors will be changed soon.

Dates to remember:

- August 5th - Shabbat in the Park
- August 12th - Pet Shabbat - 6:00 service (graduating seniors will be honored)
- September 11th - Community Picnic - First day of Religious School- Temple Beth-El
- September 23 - S'More Shabbat - 6:00 service

SCHOOL DAZE

200 Words or Less...

By Goldie & Adrian



Mark your calendars! Religious School begins on Sunday, September 11th. The combined Jewish picnic will also be on that day. The picnic will begin at 11:30, and all are welcome.

Hard to believe that, as we write this, August is upon us! Later in August, you will be receiving the second set of important school information. Please send in your registration forms that were sent out in July. We appreciate your promptness so we know our number of students and classes. Thanks!

Once again we would like to thank those who participate in the E-Scrip rebate program through Schnucks grocery and encourage new folks to participate as well. We receive monthly checks averaging about \$50 and that really helps us!

Enjoy the rest of your summer and till next time, Shalom!

High School Graduates Night at Temple Beth-El

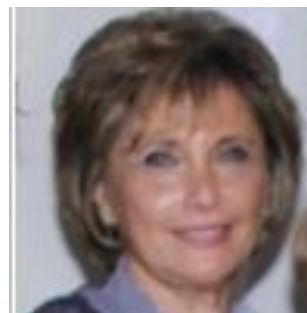


Come to services at Temple Beth-El August 12 to help send off our high school seniors. Rabbi Wing will offer a special Blessing, and the Jewish Federation of Greater Rockford will present a backpack to each student filled with supplies and information on Hillel, Israel and Birthright Israel.

StandWithUs

CHICAGO

Peggy Shapiro



Mid-west Director

Topic:

BDS: The New Anti-Semitism

Sunday, August 7,
2016

Temple Beth-El
10:00 Breakfast
10:30 Presentation

Sponsored by Temple Beth-El
Adult Education

Please RSVP to Joyce at
815-398-5020

Everyone is welcome to this
free event!

August Oneg Committee

August 5
 Vicky and David Sklar
 Jay Sklar
 The Temple Beth-El
 Family greatly appreciates and thanks our Oneg Hosts for helping to make our Services more meaningful and offering an opportunity for us all to mingle and socialize.

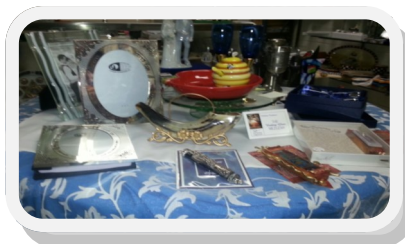
August 12
 Lauren and Mark Lamont
 Cheryl and Tim Schoeller

August 19
 Fred Young
 Nancy and Geoffrey Feinstein

August 26
 No oneg



The Temple Beth-El Gift Shop



GIFT SHOP HOURS
 Monday—Friday, call the office
 Sunday 10am - noon*
 *Open Sundays when school is in session.

If you need to visit the shop at another time, please call the Temple office (398-5020) or Pam Reum (979-9497)

August Birthdays & Anniversaries

Adults

Sonya Peysakhovich	8/1	Anniversaries
Roni Golan	8/1	Barbara & John
Arnold Rosen	8/2	Holmstrom
Zachary DeWitz	8/3	Nanci & Marc Soriano
Max Rettig	8/3	
Ted Liebovich	8/3	Adrian & Jerry Grubb
Natalie Deutsch	8/5	
Luba Peysakhovich	8/6	Nancy & Geoffrey
Jared Weiss	8/7	Feinstein
Sara Deutsch	8/13	Judy & Chuck Picus
Jake Schneider	8/13	
Paula Lash	8/13	Barbara & Jack Simon
Emily Hartman	8/14	
Jeffrey Steinback	8/16	Jackie & Len Bernstein
Enid Busch	8/17	
Brina Grigg	8/18	Patty & Howard
Samantha Glassman	8/19	Kaufman
Barbara Holmstrom	8/19	Emily & John Hartman
Michael Gordon	8/21	
Louise Gesmer	8/22	Molly & Daniel Libman
Aaron Salley	8/26	
Herb Deutsch	8/27	Patti & Jeffrey Steinback
Ryan Master	8/29	
Emily Bear	8/30	Lauren & Mark Lamont
		Roni & Ronit Golan

Children

Max Tatman	8/1/06
Ariah Lauren Quimby	8/14/08
Lilly Ruth Wing	8/22/05



10 Minutes of Torah

UNION FOR REFORM JUDAISM'S
 DEPARTMENT OF LIFELONG JEWISH LEARNING

The Union will send you a one page e-mail each day on a topic of Jewish Interest. All you need to do is find 10 minutes a day to "do Torah."

Sign up by logging on to
WWW.urj.org/Torah/Ten

YAHZEIT LIST

If you are interested in having your loved one's name on the Yahrzeit list, please call Joyce in the Temple Office, 398-5020

Read Aug 5

Robert Gross
Sol Levy
Jack Donzis
Herman Toback
Anita Harris
Jack M. Shafton

Read Aug 12

Louise Rosenzweig
Yetta Miller
Israel Simon
Samuel Schoenberg
Bertha Feinstein
Pauline Iskowich

Read Aug 19

Bere Furen
Ida Drell Mutchnik
Charles Herman Iskowich
John T. Holmstrom Sr.
Joel Garten
Lillian Berney
George J. Collier
Julian I. Corpuel
Vivien Miller Ross

Read Aug 28

N. Grace Cohen
Karen Kaplan
Rose Epstein
Miriam Halle
William "Red" Rubin
Virginia Rosenbloom
David Mansfield
Sam Leopold



MEMORIAL BOARD

Honor the memory of your loved ones by placing their names on the board in our memorial alcove. Please supply the Temple office with the name, date of birth and date of death. The minimum donation is \$200. The light alongside each name is lit every year to mark the anniversary of the death, and the name appears in the annual memorial book.



CONTRIBUTIONS TO OUR FUNDS

Dermer Fund

In memory of Jerold Dermer
-Brenda Dermer
Andrea Dermer-Baird
and Brian McCray

In memory of Gerald Grubb's brother, Gordan
-Faye Marcus

Garten Fund

In honor of Mary Roufa's retirement
-Faye Marcus

Landscaping Fund

In honor of Mary Roufa's retirement
In loving memory of Gerald Grubb's brother, Gordan
-Milly Kaplan

Security Fund

In memory of Elie Wiesel
-John and Kathy Rosenbloom

Thank You.....

The Temple has been the recipient of donations from the Temple Family in the name of many funds in order to supply much needed money for worthwhile programs and projects. We would like to spotlight a couple of these funds.

The Robert and Joel Garten Youth and Scholarship Fund is to provide camperships for religious school students. This fund is administered by the Education Committee and the Rabbi.

The Michael Dermer Religious School Fund was established for the purpose of raising money to support religious school activities. This fund is used to provide enrichment programs, scholarships and youth activities.

Landscaping Fund provides funding for enhancements to our grounds.

Sheldon Liebovich Fund for Families in Crisis provides funds for Temple families who are in need at the discretion of Temple leadership.

Rabbi's Discretionary Fund provides for the Rabbi to purchase necessary items for the Temple or to help those in need, at her discretion.

Cy Sachs Fund provides funds to be used for community-wide projects.

Hannah & Herbert Saal Fund provides funds for the betterment of Temple Beth-El.

CONDOLENCES TO:

Gerald and Adrian
Grubb on the loss of
Gerald's brother,
Gordan



Ethnic Festival and Parade

Sunday, August 28, Noon—6:00pm

7th Street and 4th Ave.

The Jewish Federation is one of the core group organizers for this community wide event. People who participated last year had a great time. We were filled with pride as we walked in the parade with our complimentary Israel

t-shirts. It was nice to have the Jewish community represented. This year the festival and parade will be bigger with more ethnic groups participating.

The Jewish Federation has volunteer opportunities for you:

- People to walk in the parade
- People to drive participants back to their cars after the parade

Please volunteer. We need you and it is great fun!!
Let me know if you need a T-shirt or if you have one from last year.

Call Goldie at 815-399-5497 or email rockfordfederation@sbcglobal.net



Memorial and Tribute Donation Form



From:

Name: _____

Address: _____

City: _____ State _____ Zip: _____

For: (check one and fill in names as appropriate)

☐ In Memory of: _____

☐ Speedy Recovery to: _____

☐ Congratulations to: _____

☐ In Honor of: _____

☐ Other: _____

To: Send the acknowledging card : ☐ Same as from,
or: Name: _____

Address: _____

City: _____ State _____ Zip: _____

Donation:

☐ Triple chai (\$54)

☐ Double chai (\$36)

☐ Chai (\$18) ☐ \$10

☐ \$4 (Min.)

☐ Other: _____

Fund:

☐ Garten ☐ Powell ☐

Lazarus ☐ Dermer ☐ Building ☐

Woodruff ☐ Rabbi's Discretionary

☐ Pap ☐ Kupperman ☐

Landscaping ☐ Gifts&Flowers

☐ Sachs ☐ Liebovich Fund

☐ Other: _____

TEMPLE BETH-EL SOCIAL ACTION ON THE GO:

******FALL COLLECTION DRIVE******

Help us as we help two local groups within our community

#1 A group of local individuals whose goal is to bring comfort to the homeless population within our community create SLEEPING MATS, pillows, and personal care “ditty” bags. They meet about once a week at the local VFW Post to make the items.

HOW IT WORKS:

Plastic bags are spun into plastic yarn called “Plarn”. This waterproof yarn is used to make sleeping mats. The group also crochets sleeping rolls that are used on top of the mats. Recycled fabric items such as t-shirts are used to make pillowcases. Additionally, personal care “ditty” bags, (made from the plastic bags) are made, and these are then filled with personal care items.



#2 The **Rock River Food Pantry** is currently in great need of plastic bags and brown paper bags to distribute food and items directly to local people in need. In addition, they are seeking donations of personal care items that are also given directly to individuals.

TEMPLE BETH-EL COLLECTION ITEMS:

Plastic Shopping Bags (thin ones from the grocery stores)

Brown Paper Bags

Yarn

T-Shirts (gently used or new)

Clear Duct Tape

Personal Care Items such as: toothbrushes, toothpaste, dental floss, deodorant, bath soap, shampoo, hair combs)



(Monetary Donations made out to Temple Beth El are always welcome as well)

There will be bins in the foyer through September

LET'S SEE HOW QUICKLY WE CAN FILL THE BINS!!!!



TEMPLE BETH-EL MINUTE WITH A MEMBER

*Dear TBE Friends:
Our next "Minute with a
Member" will feature*

*the Levy family. Please take a few moments
to learn a bit more about them. Below are
answers to a few questions. We hope you will
enjoy getting to know them a little better!.*

-Tell a little about yourself and family:

A nice Jewish boy from Oklahoma (Rob) travels to Utah to meet a nice Jamaican girl (Lisa), and they get married in Washington. Along the way a beautiful baby boy from Minnesota (Benjamin) and an amazing baby girl from Oklahoma (Noa) join us on our journey to Beloit, Wisconsin...and I'm not moving anymore!

-What do you do for fun? (Hobbies, special interests, etc.)

Lisa sleeps when she can, I bake when I can; and we pry the devices out of our kids' hands when we can. We're active supporters of our kids' activities – more like a second job than a hobby but it's almost always fun. And that's a hobby, right?

-Your favorite Temple activities:

Shabbat services. Also, helping for the set-up and take-downs for the rummage sale and Food-A-Rama. It's always amazing to

see the conversion of the social hall into a giant garage and a massive deli counter, and then return to a space that's just waiting to change into something else again.

-A memorable moment at TBE:

Technically not at TBE, but through TBE this past year we volunteered for the Senior Prom with GRTY. OK, we just handed out some of Ronit's wonderful food as appetizers. And although we were a little uncomfortably close in age to some of the 'seniors,' or maybe because of that, it was great to see so many older people decked out and getting ready to dance the night away.

-Favorite Judaic holiday or food:

Shabbat – Challah. We're definitely a breadist family.

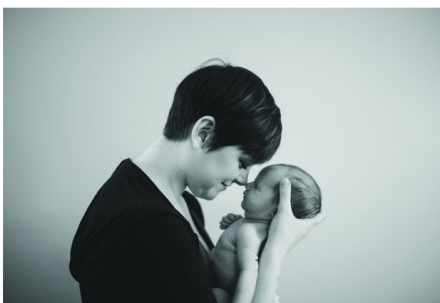


Mindy Joy

PHOTOGRAPHY

PORTRAITURE EVENT COMMERCIAL

Providing photographic coverage in Rockford and the surrounding areas.



Mindy Joy Young
Call me: 815.985.4005

Look up info & Pricing
mindyjoyphotography.com

**Inquire about dates
& reservations**
mindy@mindyjoyphotography.com

Friends of Temple Beth-El

It's a.... Car Mitzvah



Our car mitzvah donation program has earned over \$40,000 in the last 8 years. This comes about through the incredible generosity of our congregants. Jerry Paris has sold his Midas Auto Repair facility on North Main St. after being in business for 38 years. It is now owned by Butitta Bros, and the manager's name is Neil. **The new organization has agreed to continue the car donation program under the same arrangement as before.**

**Our car mitzvah
donation program
has earned over
\$40,000.
in the last 8 years.**

Please contact the new manager at 815-962-7914, and he will insure that Temple is properly rewarded. If you have any questions, please call Jerry at 815-222-6016.
Thank you for your support.

**3012 North Main Street Rockford, IL 61103
815-962-7914**

Huge Selection of Stunning Wedding Invitations



- ✦ Graduations ✦
- ✦ Bar/Bat Mitzvah ✦
- ✦ Mis Quince Años ✦
- ✦ Social Parties ✦
- ✦ Anniversaries ✦
- ✦ Business Cards ✦

5411 East State St. • Rockford, Illinois
815-399-3837 email: rrprint@att.net

1478590

Brian Thomas Photography

Bar/Bat Mitzvah Specials

815 395-1105

brianthomasphotography.com

OFFICE: 1.815.637.0165
CELL: 1.815.222.6076
FAX: 1.815.282.2268
E-FAX: 1.815.231.8414
EMAIL: cparis@GoGambino.com



Connie Paris
BROKER
CRS, GRI, e-PRO
3815 N. Mulford Rd
Rockford, IL 61114

gambino
REALTORS

GoGambino.com

Compliments of Sundberg Funeral Home, Ltd.

Darryl Johnson
Funeral Director
215 North 6th Street
Rockford, Illinois
962-7743



LOCK DOCTOR
SINCE 1974

Transponder
Keys

24 HOUR
EMERGENCY CAR OPENING
& KEY SERVICE
foreign autos our specialty
Lic. # 0191-000247

COMPLETE LOCKSMITH SERVICE

WE DO JOBS NO OTHER SHOP CAN
AUTO • HOME • COMMERCIAL • SAFE

FAST, COURTEOUS SERVICE
LICENSED, CERTIFIED
& BONDED

874-4030
OR CALL 968-4751

3437 SOUTH BEND RD. • ROCKFORD
MASTER LOCKSMITH



BRING ON THE BOOKS!

For the past eight years, the TBE Book Sale committee has been accepting your used and/or new books for listing online or for the Rummage Sale. To date **we have raised over \$18,000!**

We accept your donations throughout the year. There is a bin in the classroom hallway (to the right of the gift shop) for you to place your donations.

ARTALÉ
WINE CO.

WINE • BEER • LIQUOR
CATERING: WINE PARTIES, DINNERS, PRIVATE IN-HOME TASTINGS
6876 SPRING CREEK RD. SUITE 128, ROCKFORD, IL 61114 815.877.WINE

See our selection of Kosher Wines too!

PET SITTING BY TINA

Tina Sievers
4921 Rolex Parkway
Loves Park, IL 61111

*Providing Quality
Pet/House Sitting
since 2004*

Phone: 815.742.4537
E-mail: tsievers1956@yahoo.com



Coming Attractions

September 2016

Sat. 17th Noa Levy Bat Mitzvah

October 2016

Mon. 3rd Rosh Hashanah

Wed. 12th Yom Kippur

Sun. 30th Adult Ed; Laura Frankel

November 2016

Sat. 5th Art Auction at Anderson Gardens

Sun. 13th Adult Ed: Jewop

Acapela

Sat. 19th Joe Gesmer Bar Mitzvah

December 2016

January 2017

February 2017

March 2017

April 2017

May 2017

Sat. 27th Madeline Towne Bat Mitzvah

June 2017

July 2017

August 2017

Tentative Date *
Temple Board

Meets the 2nd Wed. each month
Library 7:00 PM

We hope this page of Coming Attractions helps you plan ahead for activities at Temple Beth-El. Please understand that some dates and times might be tentative and will be updated each month as dates get closer.

GRTY 2015-2016 Calendar

*Means you can earn service hours

Advisors: Nanci Soriano H: 654-7677 cell: 222-9626

Lauren Lamont: cell: 988-3727

RSVP to ALL activities quickly please even if you can't attend
Dues: 7-8 graders: \$25 (2nd child \$20)
9-12 graders: \$40 (2nd child \$25)
NFTY on line Registration:
www.nfty.org/no

PLANT A TREE IN ISRAEL
Commemorate happy occasions...
births, engagements, marriages,
anniversaries, graduations
or memorialize a loved one.
"A tree lives on forever in our
sacred land"

Call Carol Gordon
398-4214

or email requests to:
cggordon50@hotmail.com
Effective April 1, 2013 the price will be
\$18.00

sponsored by
Sponsored by Jewish Federation
of Rockford

Torah
Study Group
Saturday Morning 10:00 AM

The Tree of Life

Remember a loved one or celebrate a wonderful occasion by noting it forever on the Temple Beth-El Tree Of Life in the foyer. Contact the Temple office for details.

The Temple Bulletin goes away to College....

If you have a student heading off to college, we would like to send him or her a copy of the Temple Bulletin. Let them have one more connection to home while they are away. All we need are name and address, and we will do the rest. Give Joyce a call in the office, and add one more piece of mail from home for your student.

HELP WANTED: CARING COMMITTEE

The Caring Committee was formed to provide a meal(s) to a member in the event of a birth, death or illness. Anyone interested in being on the Caring Committee list or is interested in providing a ride to a Temple function, please contact Carol Gordon at 815-398-4214 or cggordon50@hotmail.com.

Membership

Do you know of any unaffiliated Jews looking for a congregation?
If so, contact Elisa Whitman, membership chairperson at 815-988-2134

Visit the Temple Beth-El
New Web Site Address...

<http://templebethel-rockford.org/>.

Check it out!

Have a Date to add?
Well!
Jayskl@aol.com

The Temple Beth-El Bulletin is a monthly publication of Temple Beth-El, Rockford, Illinois. Items for the bulletin should be submitted to the Temple office. Typewritten is acceptable, but text format on a computer disk or e-mailed to the publisher, Jay Sklar jayskl@aol.com, is preferred.